

**Design, Construction and Installation of a Mechanical Shutter and
Design of a Medical Room Door Support system for BNCT Facility at
the MIT's Reactor**

by

William Waller Carson IV

B.S., Mechanical Engineering at
Worcester Polytechnic Institute, Worcester MA (1998)

SUBMITTED TO THE DEPARTMENT OF MECHANICAL ENGINEERING ON
NOVEMBER, 1999 IN PARTIAL FULFILLMENT OF THE REQUIREMENTS FOR
THE DEGREE OF

MASTER OF SCIENCE IN MECHANICAL ENGINEERING

AT THE

MASSACHUSETTS INSTITUTE OF TECHNOLOGY

FEBRUARY 2000

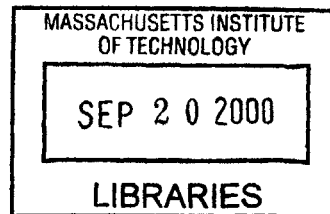
Copyright © 1999 Massachusetts Institute of Technology.
All rights reserved.

Signature of Author:
Department of Mechanical Engineering
November 4, 1999

Certified by:
Professor Otto K. Harling
Thesis Advisor

Professor Peter Griffith
Thesis Advisor

Accepted by:
Professor Ain A. Sonin
Chairman, Department Committee on Graduate Students



ENG



Room 14-0551
77 Massachusetts Avenue
Cambridge, MA 02139
Ph: 617.253.2800
Email: docs@mit.edu
<http://libraries.mit.edu/docs>

DISCLAIMER OF QUALITY

Due to the condition of the original material, there are unavoidable flaws in this reproduction. We have made every effort possible to provide you with the best copy available. If you are dissatisfied with this product and find it unusable, please contact Document Services as soon as possible.

Thank you.

Best image quality available.

**Design, Construction and Installation of a Mechanical Shutter and
Design of a Medical Room Door Support system for a BNCT Facility at
the MIT's Reactor**

by

William Waller Carson IV

Submitted to the Department of Mechanical Engineering
on November 4, 1999 in Partial Fulfillment of the
Requirements for the Degree of Master of Science in
Mechanical Engineering

ABSTRACT

A mechanical shutter system was designed, manufactured and installed; the manual drive system for the mechanical shutter was designed and manufactured; the medical room door supports were designed and analyzed for a boron neutron capture therapy medical facility. The designs for these components went through numerous iterations to conform to changing design requirements, to reduce cost in manufacturing and to reduce installation time and labor.

Thesis Supervisor: Otto K. Harling

Title: Professor of Nuclear Engineering

Thesis Supervisor: Peter Griffith

Title: Professor of Mechanical Engineering

Acknowledgments

I would like to thank Professor Otto K. Harling, for helping me find my path with this thesis. He allowed me to experience many opportunities that I would not have had without his guidance. I now have had experience with everything from material vendors, to patient radiations to mixing and shoveling concrete. I would also like to thank Professor Peter Griffith, who was always a good sounding board for ideas, a great source of information, and a constant support of my endeavors.

I would like to thank the staff at the MIT Nuclear Reactor Lab and the Fission Converter Project for their help though out my time working there. I would also like to thank the students at the Nuclear Reactor Lab.

Table of Contents

Abstract	2
Acknowledgments	3
Table of Contents	4
List of Figures	7
Chapter 1	10
Introduction	
1-1 Boron Neutron Capture Therapy	10
1-2 Thesis Objectives	12
1-3 References	12
Chapter 2	14
Mechanical Shutter	
2-1 Introduction	14
2-2 Problem Statement	14
2-3 Previous Work	17
2-4 Design Process	20
2-4-1 Mechanical Shutter	20
2-4-2 Manual Backup Drive System	31
2-4-3 Safety Concerns	33
2-5 Manufacture of Shutter	34
2-6 Installation of the Shutter Blocks	36
2-7 Installation of the Through Shaft for the Manual Drive System	41
2-8 Testing	43
2-9 References	43
Chapter 3	45
Medical Room Door	

3-1 Introduction	45
3-2 Problem Statement	45
3-3 Previous Work	45
3-4 Design Process	46
2-4-1 Medical Room Door	46
2-4-2 Manual Backup Drive System	53
2-4-3 Safety Concerns	53
3-5 Installation of the Door Support System	53
3-6 Floor to the Medical Room	53
3-7 References	54
Chapter 4	55
Strength of the High Density Concrete Bocks Manufactured by the Fission Converter Beam Staff	
4-1 Background	55
4-2 Testing	56
4-3 References	57
Summary	58
Reference	59
Appendices:	61
Chapter 2	
A2-1 Calculations to Determine the Geometry of the Front Bars	62
A2-2 Information on the Bearings used for the Mechanical Shutter	64
A2-3 Calculations of the Center of Mass for the mechanical Shutter	66
A2-4 Calculations to Determine the Deflection of the Mechanical Shutter	68
A2-5 Calculations of Force to Operate the Ball Screw Drive for the Mechanical Shutter Manually	71
Chapter 3	
A3-1 CBI Consulting Inc.'s Report on Floor Loading for MITRII	72

A3-2 Calculations of Factor of Safety for the Saddle component	74
A3-3 Calculations to Determine the Deflection in the Medical Room Door	76
A3-4 Equations to Determine the Number and Size of Bolts to Mount the Saddle for the Medical Room Door Cantilever Beam	78
A3-5 Calculations to Determine the Geometry of the Ramp and the Door crack for the Medical Room	80
Chapter 4	
A4-1 Supplemental Equations to the Strength of the Corner 3, Blocks	81

List of Figures

Chapter 2

Mechanical Shutter

Figure 2-01 Medical Room without the Mechanical Shutter (some blocks have been removed for visibility)

Figure 2-02 Cross section of elements that reside in and around the Cave, includes the Fission Converter Tank, the Filter Moderator, Collimator with the Water Shutter, the Mechanical Shutter in the Open Position, and the Support Block

Figure 2-03 Cross Section of the Mechanical Shutter in the Closed Position

Figure 2-04 Photograph of the area outside of the Water Shutter and Collimator where the Mechanical Shutter will be installed, in front of the Water Shutter is the Air Transport System to install components into the Cave

Figure 2-05 Schematic of the Horizontal Mechanical Shutter

Figure 2-06 Schematic of the Slanted Mechanical Shutter

Figure 2-07 Mechanical Shutter in the Open Position (some blocks have been removed for visibility)

Figure 2-08 Mechanical Shutter in the Closed Position (some blocks have been removed for visibility)

Figure 2-09 Photograph of the Collimator and Water Shutter

Figure 2-10 Schematic of the Mechanical Shutter System with the Bottom Block highlighted

Figure 2-11 Cross Section of the Support Block showing the cut out for the Fill/Drain Line of the Water Shutter

Figure 2-12 Drawing of the slot in the back of the Support Block

Figure 2-13 Photograph of the bottom end of the Mechanical Shutter with two Bearings showing

Figure 2-14 Original Concept of the Mechanical Shutter

Figure 2-15 Photograph of the Mechanical Shutter showing the slots on the reactor side where the vent pipe of the Water Shutter will pass by the shutter

Figure 2-16 Schematic of possible radiation stream paths with out the Back Shield Bars

Figure 2-17 Schematic of blocked radiation stream paths with the Back Shield Bars

Figure 2-18 Schematic of the Mechanical Shutter System with the Back Shield Bars highlighted

Figure 2-19 Schematic of the Mechanical Shutter System with the Front Horizontal Bars highlighted

Figure 2-20 Schematic of the Mechanical Shutter System with the Side Supports highlighted

Figure 2-21 Photograph of the Left Side Support where the Fill-Drain Pipe from the Water Shutter penetrates the support

Figure 2-22 Drawing of the Through Shaft, the Hand Crank is not shown

Figure 2-23 Drawing of the Hand Crank with out the Through Shaft attached by the chain

Figure 2-24 Photograph of the Shutter after the lead was cast, and before the concrete was added

Figure 2-25 Photograph of the Shutter and the Support Block being delivered to MITRII

Figure 2-26 Photograph Depicting the Installed Side Supports with the Nuclear Reactor and Collimator shown behind the supports

Figure 2-27 Photograph of the temporary shielding so that the Reactor could power up with out the Mechanical Shutter in place

Figure 2-28 Photograph of the Installed Support Block

Figure 2-29 Photograph of the Installed Shutter System

Figure 2-30 Photograph of the Drive System for the Mechanical Shutter mounted in place

Figure 2-31 Drawing of the Through Shaft with Components Specified

Chapter 3

Medical Room Door

Figure 3-01 Drawing of the original support system with a post, the mount to the containment wall is not shown for clarity

Figure 3-02 Drawing of the supporting wall blocks for the support system for the Medical Room Door

Figure 3-03 Schematic of the Cantilever Truss

Figure 3-04 Scans of the Proposed Drive and Trolley System

Chapter 4

Concrete Strength

Figure 4-01 Schematic of the Medical Room with the Corner 3 Blocks Labeled

Appendix

Figure A2-01 Cross-Section of the Mechanical Shutter Blocks and Bars

Figure A2-04 Cross-Section of the plates that make up the Mechanical Shutter

Figure A3-02 Thinning of Sheet Metal when it is bent

Figure A3-03a Deflection Plot of the Main I-Beam when the Door is closed

Figure A3-03b Deflection Plot of the Main I-Beam when the Door is open

Figure A3-03c Deflection Plot of the Cantilever I-Beam at Maximum Loading

Figure A3-03d Total Deflection of the Medical Room Door at three points in its travel

Figure A3-04 Schematic of the Cantilever Beam System that depicts critical dimensions and Bolt Holes

Chapter 1

Introduction

1-1 Boron Neutron Capture Therapy

Boron Neutron Capture Therapy (BNCT) is a process by which cancerous cells are killed with minimal damage to surrounding cells. This method is of interest in areas of the body where operations are difficult, such as the brain and for invasive tumors such as glioblastoma multiforme (GBM). This method of cancer treatment was first suggested in 1936.¹ BNCT requires a ^{10}B atom attached to a cancer-seeking compound. Any cancer-targeting compound can be used as long as it can deliver enough ^{10}B atoms to the cancerous cells. The higher the concentration of ^{10}B atoms that can be delivered to the cancer cells in comparison to the surrounding cells the better.

BNCT works in the following way. When a neutron is injected into the Boron ten (^{10}B) rich environment and is absorbed by the ^{10}B atoms it changes into an excited state of ^{11}B , noted as $^{11}\text{B}^*$. The $^{11}\text{B}^*$ atom is a highly unstable form of the Boron atom. When it decomposes, it primarily becomes an excited state of Lithium seven ($^7\text{Li}^*$). Like $^{11}\text{B}^*$, $^7\text{Li}^*$ is a highly unstable atom which transforms into ^7Li with a gamma ray given off. The other possible decay path of the $^{11}\text{B}^*$ atom, will fission directly into a ^7Li atom. The two possible decay paths also release short-range but energetic ions. The range of the alpha particles range is so short-range that it typically will terminate the cell that the ^{10}B atom resides in, and or the adjacent cell. BNCT spares cells more distant than about ten micrometers; therefore, it is considered a cellular tumor targeting therapy.²

The BNCT process requires a neutron source, which currently is produced by a nuclear reactor. In order to get a pure epithermal neutron stream, the raw radiation being emitted from the reactor is modified by filtering out all other types of radiation. The undesired radiation includes fast neutrons and gamma rays. This filtering process at MITR-II is accomplished by use of a Filter Moderator and a photon shield. This filter filters out all but the epithermal neutrons that this process requires.

Once a suitable neutron beam is generated, it must be collimated to the patient position. This is done with a collimator that is tapered at an angle of 65.37 degrees. This

device is also used as a shutter to stop the fast neutrons and some *radiation* when the system is not in use. To reduce the radiation still further when the system is not in use, the volume of the collimator is filled with water. This volume is called the Water Shutter. Water is used because the hydrogen of water tends to slow and absorb the fast neutrons.

The portion of this project that is covered by this thesis is the design and installation of the fast shutter, the design of the drive system for the fast shutter, and the shielding door for the Medical Room along with its suspension system. Both the “Fast” Mechanical Shutter and the Medical Room Door suspension system are to be installed in the new Medical Room at MIT’s nuclear reactor. Currently there is a medical room located below the reactor in the basement. The new Medical room will be on the beam tube floor of the reactor and it will use a fission converter for its neutron source. Because of the high intensity, both the shutter and the door to the Medical Room must be able to block high intensities of radiation.

The new Medical Room mechanical shutter needs to be designed and constructed so that the facility will be safe and reliability provide a controllable dose of radiation to the patient. The Medical Room door needs to be designed and constructed so that when the patient is being irradiated within the Medical Room, the staff will not receive significant doses of radiation. The Medical Room door will protect the staff by preventing radiation from leaking out of the Medical Room through the entrance hallway.

Jerry White, another Mechanical Engineering graduate student, has worked on earlier designs for the mechanical shutter and door for the Medical room. He concluded that a horizontal shutter consisting of lead, steel, concrete and polyethylene would be the most desirable design to pursue.³ Balendra Sutharshan⁴, and Michelle N. Ledesma⁵ concluded that such a shutter would attenuate the beam to approximately one milli-rem per hour. Jerry White also concluded that an all steel door hung by trolleys would be the best design for the door of the Medical Room.³

What this thesis will cover is the final design, construction and installation of the Mechanical Shutter, manual override for the shutter, and the design of the door support structure and door to the Medical Room along with an override for the door.

1-2 Thesis Objectives

This thesis will cover the design through the installation phases of a “fast” mechanical shutter for the Medical Room at MITRII. This shutter will be the final shutter to block the neutron beam used in the cancer treatment known as Boron Neutron Capture Therapy (BNCT). This thesis will also include the design of the Medical Room Door. This door will contain the radiation that is released within the Medical Room that is generated by the neutron beam. Both the Shutter and the Door must be driven mechanically and have manual backups to ensure the patient and the medical staff can operate the system even if a power failure occurs.

In order to complete the fast shutter, complete engineering drawings, bearing sizing and selection, and drive system sizing and selection must be completed and sent out for manufacturing. The shutter has six major components. These components are; the shutter block, bottom block, two side supports, bearings, the electrical drive system and the manual drive system. The shutter, bottom block, the side supports and the manual drive system need to be designed and manufactured. All the components need to be assembled and installed.

The door to the Medical Room needs to be designed. Along with the door, the frame for the door needs to be designed and analyzed for stresses and failure states. Trolleys need to be selected for the door and an electric drive mechanism needs to be found. The door and support need to be designed so that minimal radiation is allowed to pass out of the medical room. Along with the electric drive, a manual drive system needs to be designed or purchased for the door.

1-3 References

1. Locher, G.L., “Biologic Effects and Therapeutic Possibilities of Neutrons,” *Am. J. Roentgenol*, 36:7 1936.
2. Kiger, William Steadman, “Neutronic Design of a Fission Converter-Based Epithermal Beam for Neutron Capture Therapy”, Nuclear Engineering Thesis, MIT, 1996
3. White, Jerry R., “Conceptual Engineering Designs for a Mechanical Shutter, a Medical Room Door, and a Water Shutter for a Fission Converter-Based

Boron Neutron Capture Therapy Medical Facility”, Mechanical Engineering Thesis, MIT 1999

4. Sutharshan, Balendra, “Engineering Design of a Fission Converter-Based Epithermal Beam for Neutron Capture Therapy”, PhD. Thesis, MIT, 1998
5. Michelle N. Ledesma, “Medical Room Design for a Fission Converter-Based Boron Neutron Capture Therapy Facility”, B.S. Thesis, MIT, 1998

Chapter 2

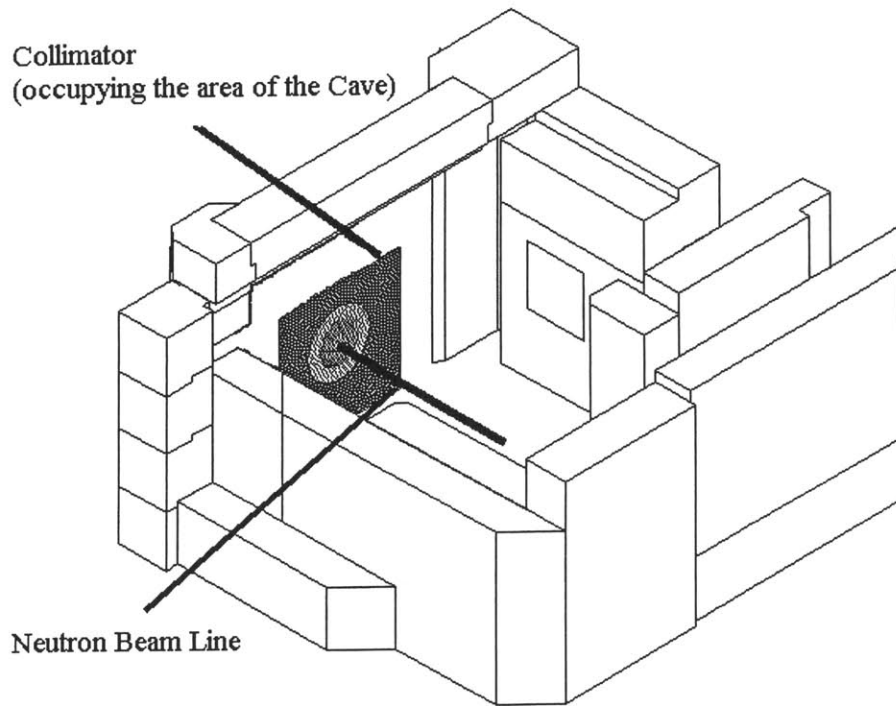
Mechanical Shutter

2-1 Introduction

The “fast shutter” is the device that turns on and off the neutron beam that is generated within the nuclear reactor at MIT and delivered to the Medical Room. This shutter in the closed position attenuates the neutron beam by a factor of about three orders of magnitude. Two other shutters are used to fully attenuate the neutron beam, a boron containing shutter in front of the fission converter fuel, and a water shutter in the main collimator. These two shutters provide a further attenuation of about three orders of magnitude.¹ In the shutter’s open position, there is a insert in the aperture that continues to collimate the neutron beam until it finally exits the system of shutters and filters that purify and directs the beam onto the patient position.

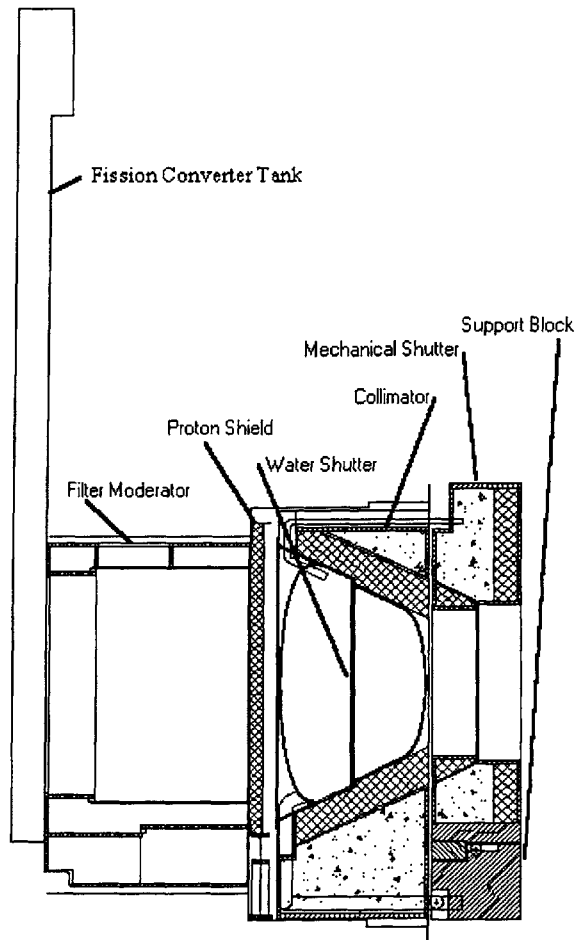
2-2 Problem Statement

In order to build the fast shutter, complete engineering drawings, bearing sizing and selection, and drive system sizing and selection must be completed. The appropriate parts need to be sent out for manufacturing. The shutter and the components that form the final shielding for the inside of the medical room need to be designed and manufactured. After which all the components need to be installed and tested.



2-01 Medical Room with out the Mechanical Shutter (some blocks have been removed for visibility)

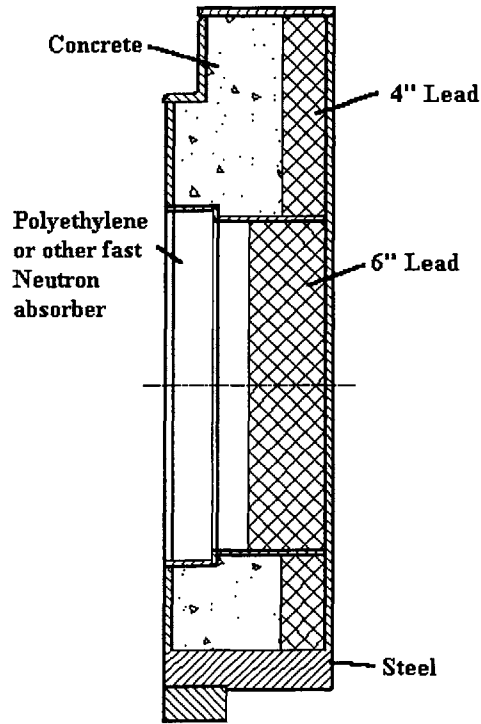
The shutter also needs to cover most of the entrance to the “cave” located on the main floor of the reactor where the blanket neutron facility once was located. (The cave is the area within the reactor housing in which the fuel tank, the filter moderator and the collimator are located.) Figure 2-01 shows the Medical Room with some blocks removed for clarity. In this figure is shown the area of the cave that is filled with the collimator and the water shutter, the area in front of the cave will be occupied by the Mechanical Shutter. Figure 2-02 shows the stack of components that are within the cave, and includes the Mechanical Shutter blocks.



2-02 Cross section of elements that reside in and around the Cave, includes the Fission Converter Tank, the Filter Moderator, Collimator with the Water Shutter, the Mechanical Shutter in the Open Position, and the Support Block

This area is not as well shielded because of the lack of mass between the reactor core and the outer environment. In order to provide enough shielding the shutter must be fifteen and three quarter inches thick and must overlap the edges of the cave sides. The fast shutter is not the only device that attenuates the neutron beam, but it is the last one to be removed before a patient can be irradiated. The shutter's internal construction must have the part of the shutter that faces toward the medical room made out of lead, while the most of the rest of the shutter is made out of concrete. The open position must have a conical section that continues to collimate the beam. This opening must have six inches of lead around its circumference. In the closed position, the shutter must be made out of borated polyethylene or some other fast neutron absorbing material on the reactor side,

and lead on the patient side. Figure 2-03 shows a cross section of the Mechanical Shutter in the closed position.

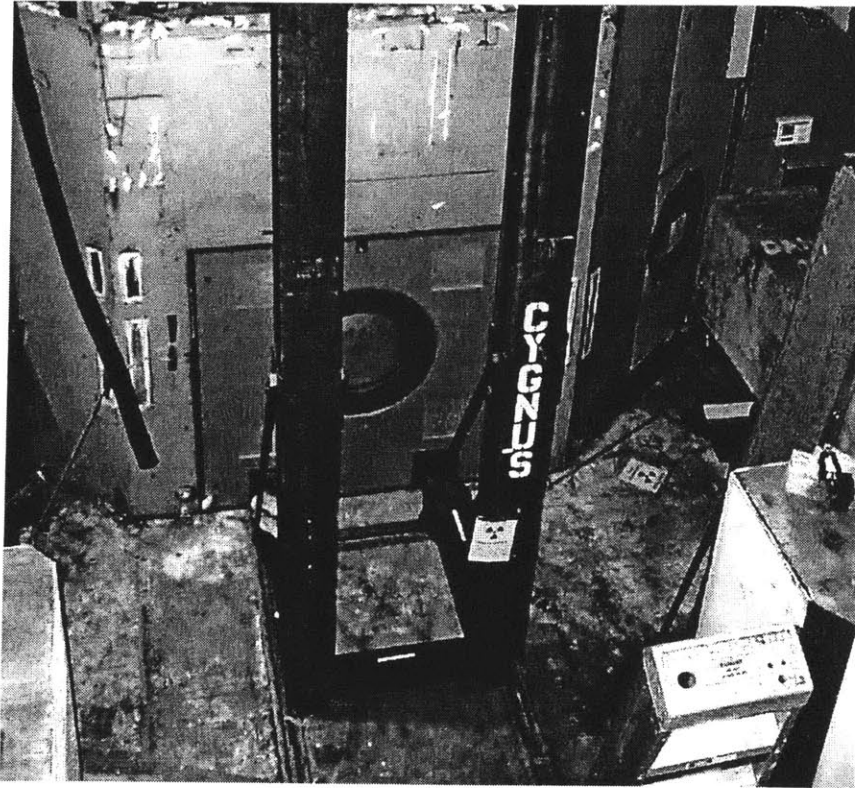


2-03 Cross Section of the Mechanical Shutter in the Closed Position

The shutter must move from the open to closed position in a time of ten to fifteen seconds. The design of the shutter must also take as little space in the medical room as possible. The shutter must also be manually closeable, in case of a power failure or malfunction in order to protect the staff and the patient.

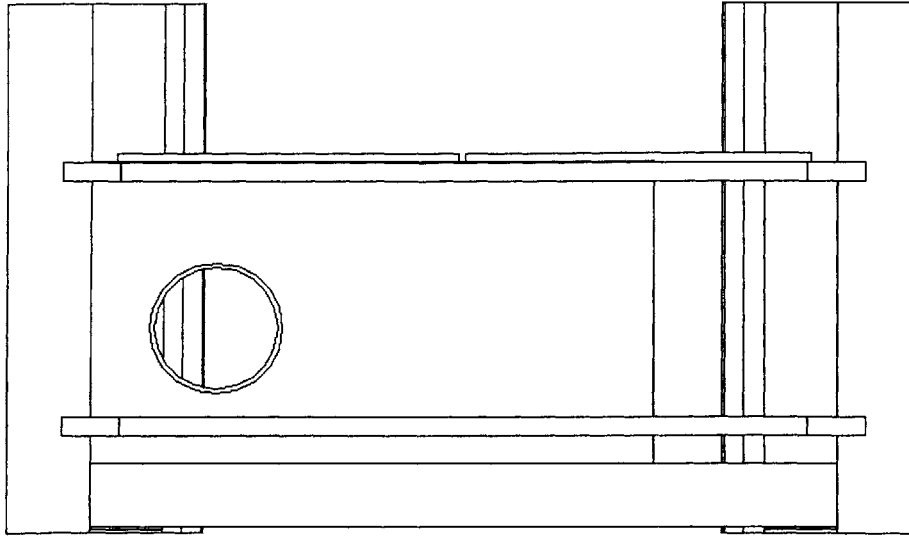
2-3 Previous Work

The shutter has gone through some major modifications in its design. In Jerry White's thesis,² the different possibilities are discussed in detail for shutters that can be placed in front of the Collimator that is shown in Figure 2-04.



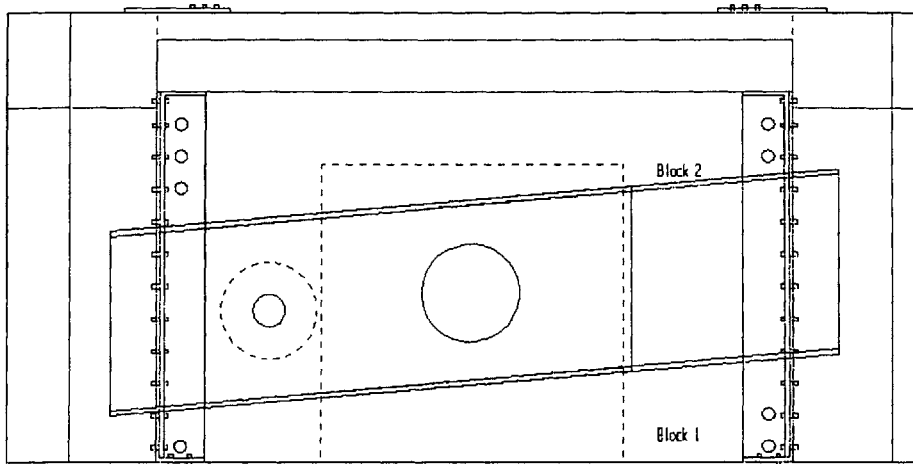
2-04 Photograph of the area outside of the Water shutter and Collimator where the Mechanical Shutter will be installed

From the results of Jerry's thesis it was determined that a horizontal fast shutter should be used, such as shown in Figure 2-05. (Other alternatives were a vertical shutter and a curricular shutter.)



2-05 Schematic of the Horizontal Mechanical Shutter

With this information, one other possibility was looked at. This design would have the shutter at a five-degree slant as shown in Figure 2-06.



2-06 Schematic of the Slanted Mechanical Shutter

The benefit to that design is if a power failure should occur, gravity would assist in the closing of the slanted shutter. However this design was much more complicated and it was decided to go with a horizontal shutter. The shielding of the shutter, its geometry,

the bearings, the drive system and the manual back up to close the shutter in case of a power failure was also examined in detail.

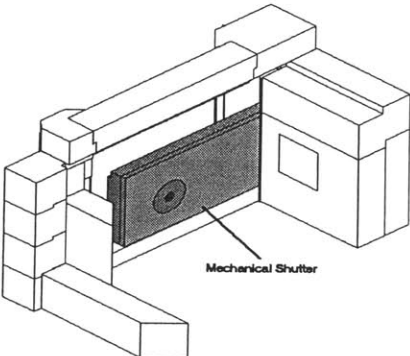
2-4 Design Process

2-4-1 Mechanical Shutter

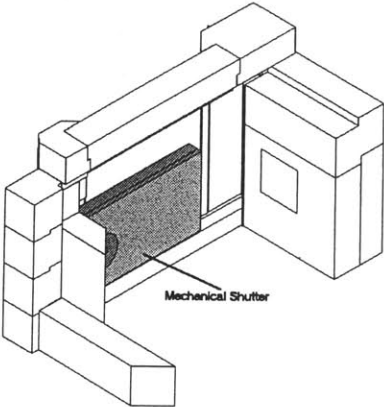
The shielding of the shutter was most important. In order for the shutter to adequately reduce the radiation from the collimated beam, the shutter was made with a plug that was manufactured with different materials so that the intensity of the beam and the background radiation coming from the reactor could be attenuated. Refer to figure 2-03 that is on a prior page to get a visual understanding of the cross section of the plug and the way the shutter was designed to reduce radiation from entering the Medical Room. The plug was designed with a step so that there would be no streaming of the radiation beam. The plug was also designed to be nine inches larger in diameter than the beam so that all the radiation would have to go through most of the shielding that the shutter provides. The materials originally selected to make the plug were about 7.5 inches of lead on the patient side and the same amount of borated polyethylene on the reactor side. The rest of the shutter is designed with four inches of lead on the patient side of the shutter that keeps the background radiation of the cave at reasonably low levels. The remainder of the space was filled with Borated concrete. Around the beam port of the Mechanical Shutter 3.75 inches of lead is placed to add to the shielding of the lead insert that will continue to collimate the neutron beam. The total amount of lead will add up to about six inches of lead to provide shielding for the neutron beam. This is comparable to the Collimator for shielding around the area of the neutron beam. The beam port is designed to accept the lead insert that will collimate the neutron beam, and can be replaced for varying shapes and sizes of beams. The final weight of the shutter is 30,200 pounds.

A requirement for the shutter is to have a two-inch overlap with the cave so that the amount of radiation passing around the edge of the shutter from the cave is stopped or at least greatly reduced. By combining the upper block to the shutter, the overlap had to cover the upper portion of the cave as well as the sides. The shutter is required to move a

total distance of 52 inches because the aperture of the shutter, when the shutter is closed, must also be two inches away from the opening of the cave. The shutter had to be one hundred thirty two inches long, and have space on either side to travel a distance of at least 52 inches. The total length required for the “Fast” Mechanical Shutter to operate is 236 inches while the Medical Room is only 156 inches wide. To accommodate the travel of the shutter the walls had to be notched so that the shutter could open and closed as it was intended to do. By notching the walls, or rather casting the wall blocks around a notched form, the shielding of the Medical Room was then compromised to a degree. To solve this problem extra shielding was added to the left (facing toward the reactor) outer side of the room and the shutter was designed to fill the notch on the right side when the beam is on. See Figures 2-07 and 2-08.

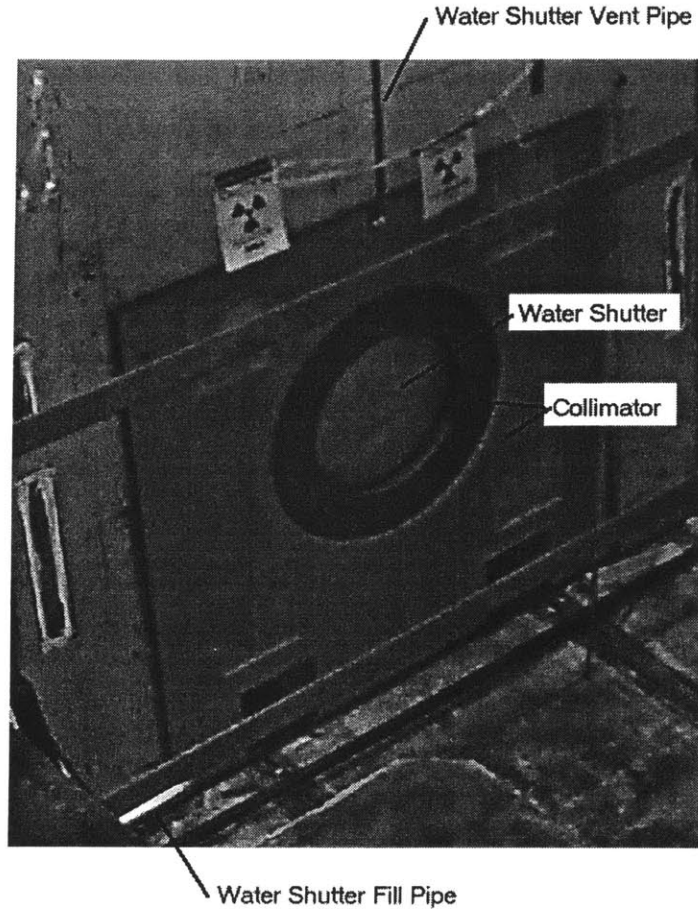


2-07 Mechanical Shutter in the Open Position (some blocks have been removed for visibility)



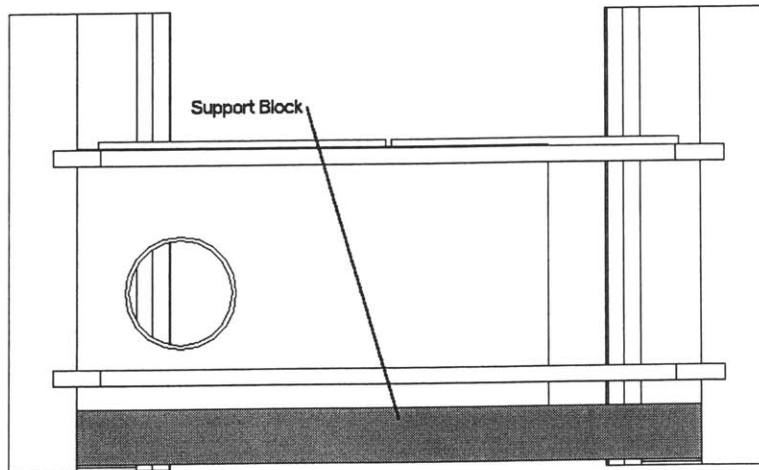
2-08 Mechanical Shutter in the Closed Position (some blocks have been removed for visibility).

Since the collimator and the water shutter were installed into the cave before the fast shutter, the shutter had to avoid interfering with the fill and vent pipes from the water shutter that pass through the area that the fast shutter occupies (see Figure 2-09).



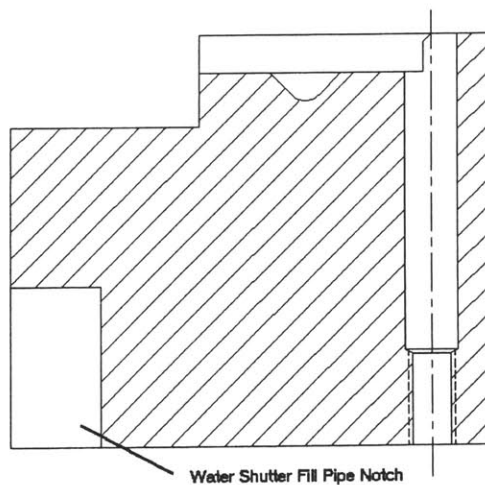
2-09 Photograph of the Collimator and Water Shutter

The water shutter has its fill line near the floor. The fill line pipe is 2.375 inches in diameter. This means that the support block (see Figure 2-10) needs to accommodate the pipe while still providing enough shielding and support for the fast shutter.



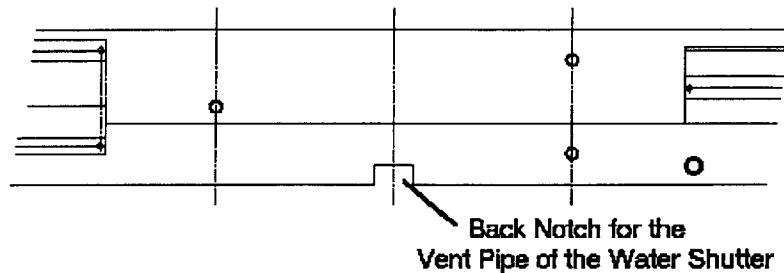
2-10 Schematic of the Mechanical Shutter System with the Bottom Block highlighted

Placing the fill line on the extreme side of the collimator away from the control side of the medical room helped the shielding problem. This allows the shortest length of pipe to be exposed to minimal radiation of the cave and it keeps it far from the beam line. The pipe then goes into a notch cut out of the bottom block on the lower edge, which runs the pipe out of the shutter system. See Figure 2-11 for a view of the fill line notch in the Support Block.



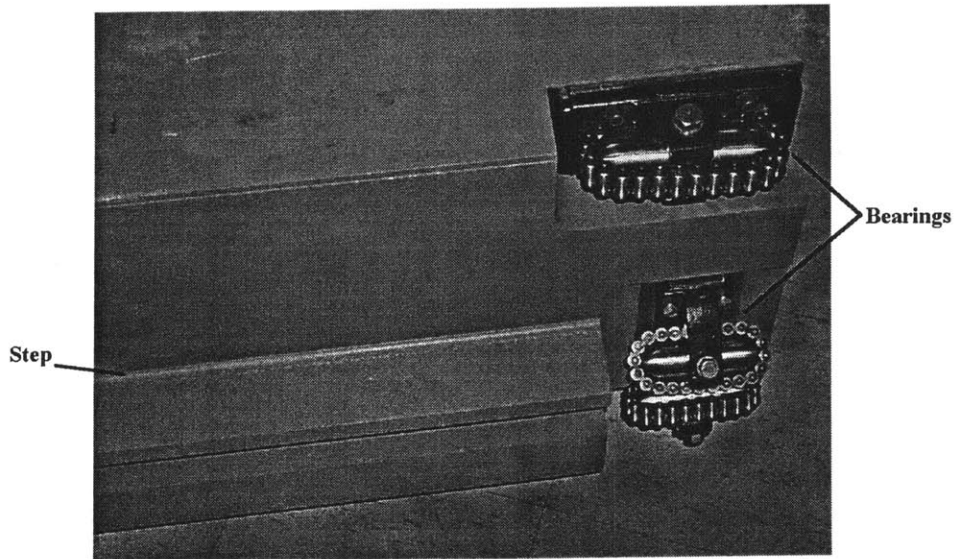
2-11 Cross Section of the Support Block showing the cut out for the Fill/Drain Line of the Water Shutter

The vent pipe for the water shutter is located on the top of the water shutter and comes out of the collimator centered in the cave. This pipe sticks out from the reactor face and the support block must fit over it so the block may be raised and lowered. For this reason a slot was milled into the support block so that as the block is positioned between the frames the pipe transverses the slot. See Figure 2-12 for a view of the vent pipe notch.



2-12 Drawing of the slot in the back of the Support Block

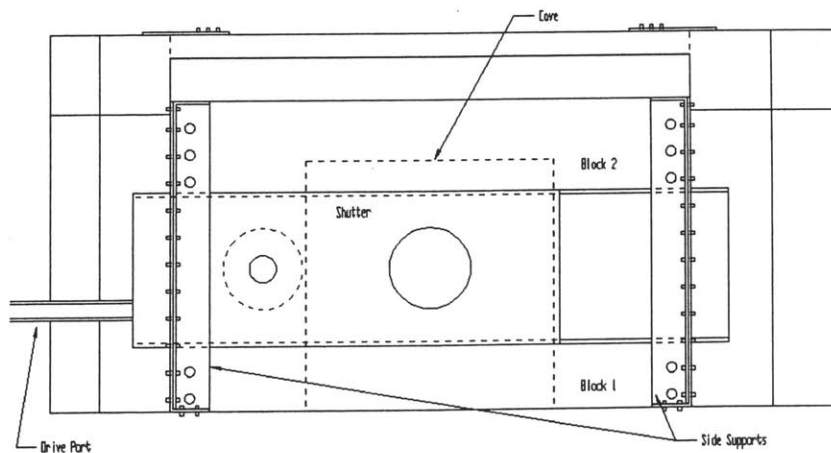
The interface between the support block and the shutter has changed as well. It was originally a tongue and groove joint. This allowed for less streaming of the neutron beam. As the bearings were added to the shutter system, however, it became obvious that there was insufficient shielding on the side of the shutter with the two sets of bearings, to protect the patient from being improperly irradiated. Therefore, it was decided to use a step joint rather than a tongue and groove joint. The height of the step was equivalent to that of the bearings. Figure 2-13 shows the step in the shutter and the bearings that the shutter rides on.



2-13 Photograph of the bottom end of the Mechanical Shutter with two Bearings showing

This allows for added shielding for the double bearings and prevents the streaming of the neutron beam. Figure 2-28 shows the Support Block with the rails attached, the rails and the step in the Support Block line up with the bearings and the step of the Mechanical Shutter.

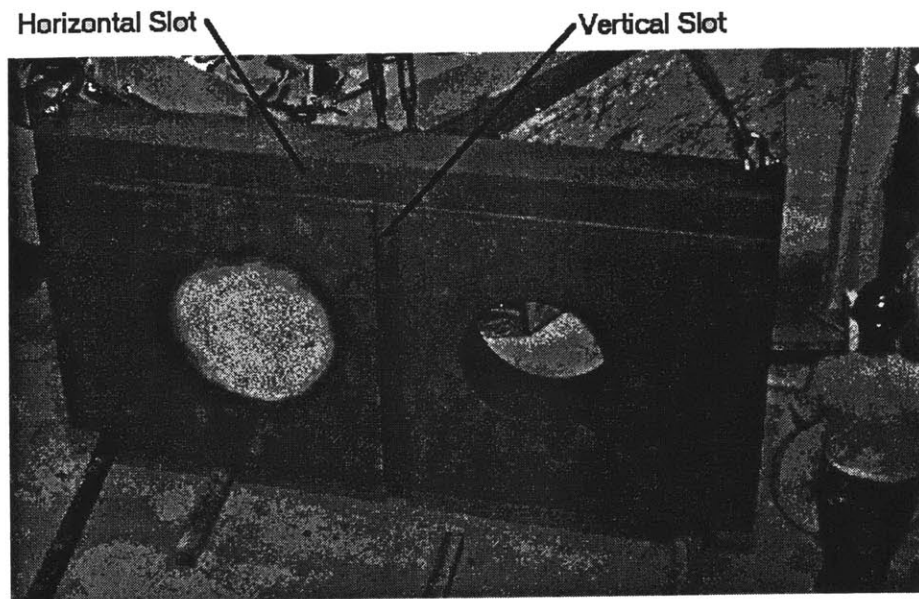
The upper block was combined with the shutter to make the system easier to install and to reduce cost. Figure 2-14 shows the original concept for the shutter.



2-14 Original Concept of the Mechanical Shutter

By combining the blocks the part count was reduced by one major item, the complexity of the system was reduced, and the options for the drive system were increased. By combining the two blocks, the upper block no longer needed to be manufactured. Making the shutter the upper most block is a benefit, this is because the drive system can be placed on top of the shutter or in the space directly above the shutter. This allows the drive mechanisms to be placed internal to the Medical Room. This reduces the space allocated to the shutter system. The absence of the upper block adds a void that can be used for the air return vent for the Medical Room.

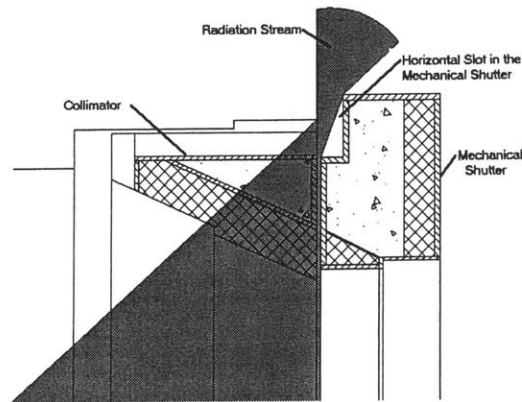
The shutter needs to have a vertical slot similar to the support block so that during installation it can pass the vent pipe of the water shutter. Figure 2-15 shows a picture of the vertical slot in the Mechanical Shutter.



2-15 Photograph of the Mechanical Shutter showing the slots on the reactor side where the vent pipe of the Water Shutter will pass by the shutter

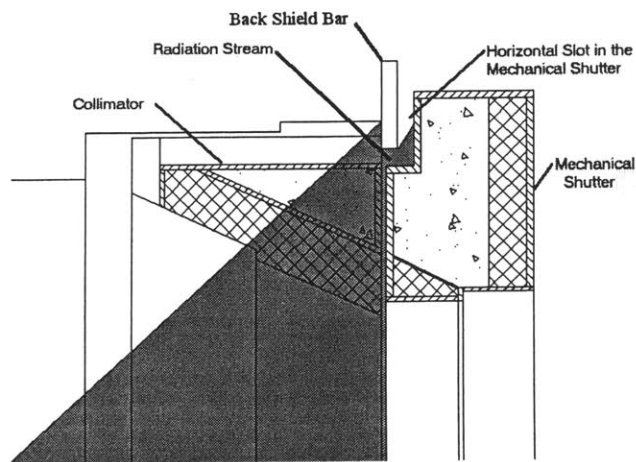
Once the shutter is in place, the vent pipe still protrudes into the shutter's planned area. This is because the water tank needs to vent the air in the Water Shutter tank, and the only path that is available is out the front of the cave and up the face of the reactor. To accommodate the vent pipe, the shutter needs to have a horizontal slot cut out for the vent. Since the shutter travels horizontally, a slot is needed in the back of the shutter to

allow it to open and close the beam properly. This slot opens up a path for background radiation coming from the cave to escape into the room from the top of the shutter (see Figure 2-16).

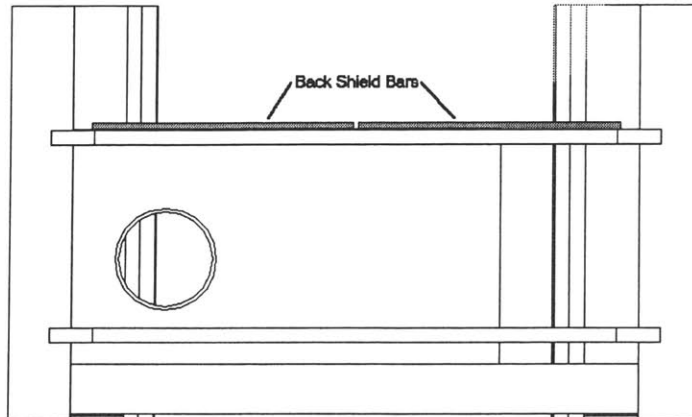


2-16 Schematic of possible radiation stream paths with out the Back Shield Bars

To remedy this problem the back shield bars were added (see Figure 2-17).



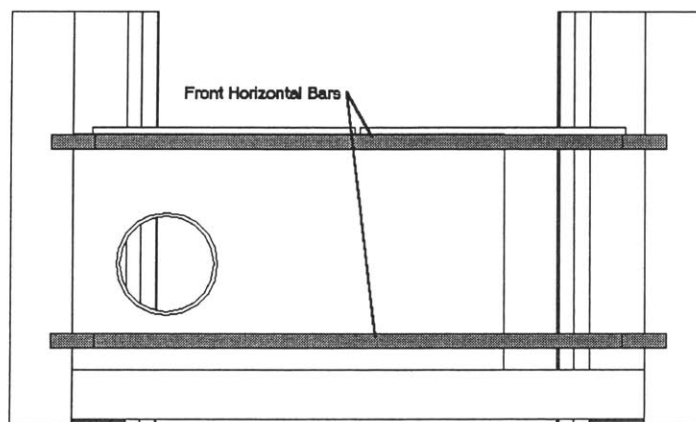
2-17 Schematic of blocked radiation stream paths with the Back Shield Bars



2-18 Schematic of the Mechanical Shutter System with the Back Shield Bars highlighted

They are made out of steel that is designed to reduce the gamma and neutron radiation to tolerable levels. These bars have to be added last because they interfere with the insertion of the support block and the shutter during installation (see Figure 2-18).

Two front horizontal bars (see Figure 2-19) are designed and installed on the patient's side of the medical room.



2-19 Schematic of the Mechanical Shutter System with the Front Horizontal Bars highlighted

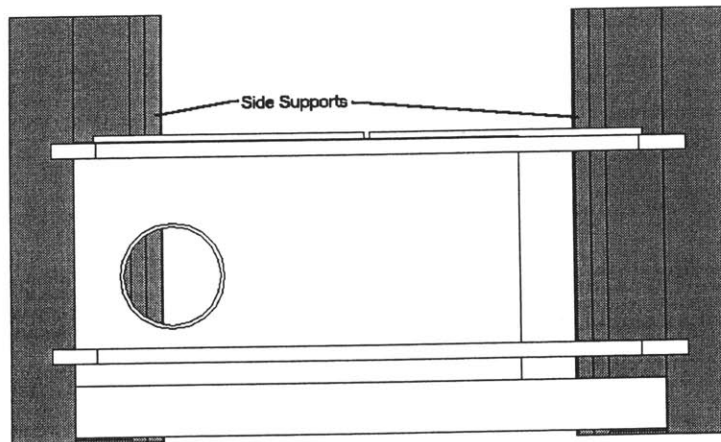
These tie and support the two sides of the shutter system together. The top bar is also designed as a guard for the fast shutter to decrease the possibility of tipping onto the

patient. Refer to Appendix A2-1 for calculations that determined the geometry of these bars. The reactor face prevents the shutter from tipping away from the patient. The second bar was added to add rigidity to the system and to provide a place for bolting a safety cover and a final collimator for the beam to allow more flexibility of the beam type.

With the elimination of a separate upper block, the larger shutter is prone to tipping. Since the upper block is now added into the shutter construction, the aspect ratio of the shutter has increased so that preventative steps had to be considered to prevent the shutter from tipping over. It was determined that the upper front bar would suffice to prevent the Mechanical Shutter from tipping over. If at any time the shutter should rub against the bar, the system should be thoroughly examined to find what happened and to derive a solution so the problem does not continue to exist.

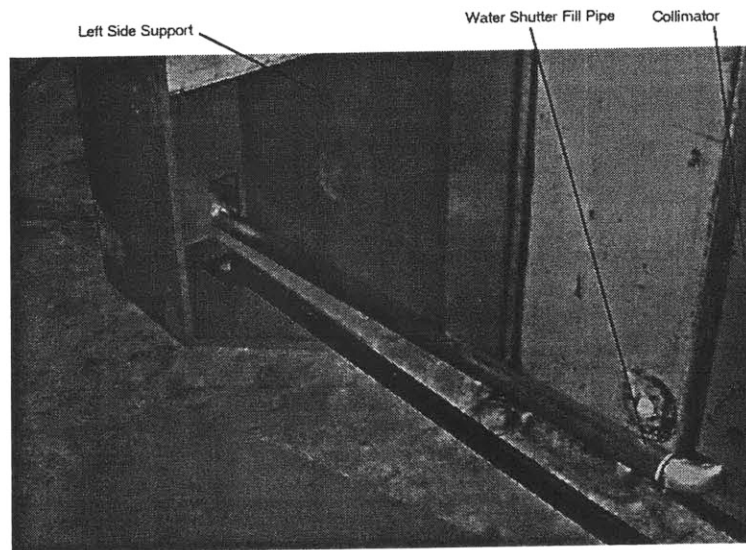
Two front bars were placed in front of the shutter. The top one is the only functional bar to restrain the shutter, while the other will be used to mount a final sheet over the face of the shutter to protect staff and patients from the shutter.

The two side supports (see Figure 2-20) encompass the ends of the support block and allow the shutter to slide into the two sides. The supports bolt into the reactor face and to each other by way of the front bars.



2-20 Schematic of the Mechanical Shutter System with the Side Supports highlighted

Each of the two supports has a bottom plate with a pin that connects the two side supports to the bottom block. This aligns and connects the system to the whole unit. The pins are located on a bottom sheet of steel that connects the whole bottom of the side support. Since the side supports will be lowered into place after the collimator and water shutter are in place a slot had to be made in the bottom of the left side support when facing the reactor from the Medical Room (see Figure 2-21).



2-21 Photograph of the Left Side Support where the Fill-Drain Pipe from the Water Shutter penetrates the support

The bearings that were selected roll on cylindrical rails so that debris will slide off the rail and the bearings act like a tank's tread. The bearings are designed to pivot and to accept some misalignment. Refer to Appendix A2-2 for more information on the bearings used by the Mechanical Shutter. The center of mass for the shutter was calculated as well to ensure the bearings would not be over loaded and that the shutter would be properly supported. Refer to Appendix A2-3 for calculations on how the center of mass for the Mechanical Shutter was determined.

Since the weight of the shutter is so large, 30,200 pounds, and the bearings position should be toward the ends of the shutter to reduce the amount of radiation absorbed, it became important to ensure that the shutter could span the distance required without the possibility of a failure accruing. After the deflection calculations were computed, it turned out that a steel box around the shutter would be sufficient to support

the shutter as a whole. Refer to Appendix A2-4 for calculations on the deflection of the Mechanical Shutter.

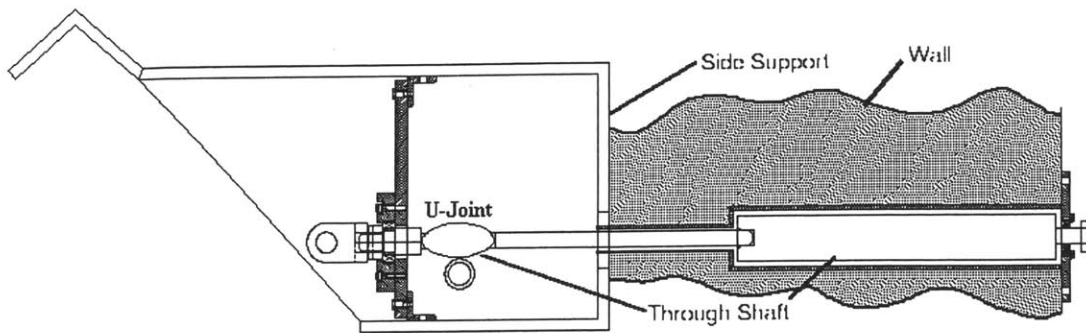
Chain drives, pneumatics and ball screws were all considered. The ball screw drive was chosen, as it is clean, reliable, repeatable and accurate. The ball screw has the disadvantage that the drive takes up space inside the Medical Room and needs to have its shaft penetrate the wall of the Medical Room to allow for manual closure of the fast shutter. The ball screw works with an electrical motor that is connected to the drive by way of a worm gear. This gear is attached to a “nut” which when turned by the motor will move the threaded shaft in and out depending on the direction the motor is turning.

2-4-2 Manual Backup Drive System

In order to get Nuclear Regulatory Commission (NRC) approval to use the Medical Room the shutter must have a manual closure system that can be activated from outside the Medical Room. Described below is a plan to operate the Mechanical Shutter manually.

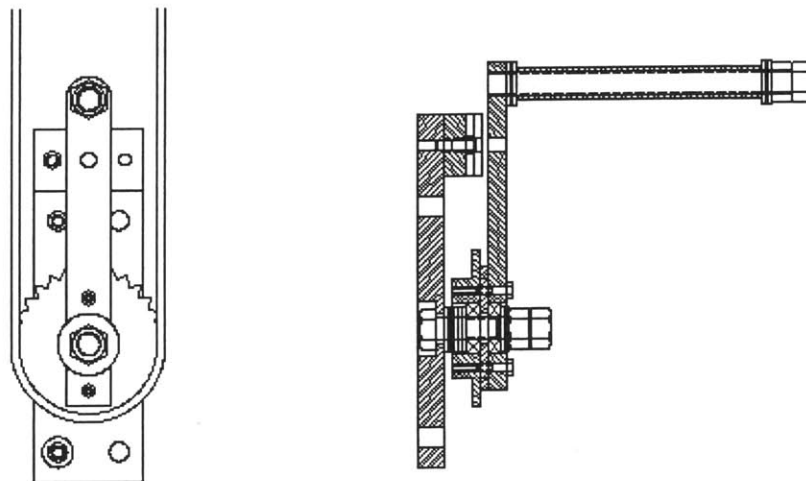
The Manual Backup System turns the ball screw system backwards from normal use to drive the shutter. In this case the “nut” is held in place when there is a power failure due to an automatic break system. The screw now can be turned and this would push the “nut”, which is attached to the Mechanical Shutter, back and forth to operate the shutter.

To gain access to the screw, a shaft had to be made to extend out of the Medical Room so that the operators could manually operate the shutter. This is a penetration in the shielding of the room, so a stepped shaft had to be placed in the wall so that radiation would not stream out of the hole. Figure 2-22 shows the manual backup shaft that penetrates the wall of the Medical Room and extends to the Linear Actuator Ball Screw Device.



2-22 Drawing of the Through Shaft, the Hand Crank is not shown but a chain connects the shaft to the crank by way of the cog on the left side of the shaft and near the pivot of the crank

The clearance around the shaft had to be very small to reduce radiation streaming. On either end of the hole are bearings to support and to take the axial load that the shutter puts onto the screw and shaft. Outside of the Medical Room, the shaft is translated to a height so it can easily be operated by the personal of the Medical Room. Figure 2-23 shows the Hand Crank of the Manual Drive System.



2-23 Drawing of the Hand Crank with out the Through Shaft attached by the chain
 The crank arm is pinned to the wall so that when the shutter is operated normally (with an electric motor), the shutter will move rather than the manual override device. In the case

of an emergency, the operators would only have to pull the pin and then turn the crank manually using the handle that is attached to the arm.

The thrust bearing was mounted near the drive system and a universal joint was added to the shaft so the shaft would be more compliant to the alignment of the equipment. Without this joint, the possibility for the shaft locking into place rendering the entire manual drive system not operational would exist. The manual drive was changed from a chain fall to a crank that is translated from the shaft by a chain drive. This allows the operator to be unconcerned about where the chain is and where it is falling and be concerned only with cranking in a defined space by the wall.

To operate the manual closure the operators must first pull the pin that prevents the shaft from rotating normally, then rotate the shaft with the use of the crank. Since the shutter was installed and the drive was mounted, it was possible to predict the force required to turn the handle. It was calculated to be 20 lbs with a crank arm of eight inches for a gear ratio of 2:1. A brake on the motor prevents the motor from being backward driven which would remove any possibility of operating the shutter manually. Refer to Appendix A2-5 for calculations on the force required to operate the manual override for the Mechanical Shutter.

2-4-3 Safety Concerns

There is a concern of a mechanical or electrical failure while the shutter is in motion, resulting in the shutter impacting the end of the side support. The greatest velocity of the shutter is the max velocity of the drive system. With this assumption, the force the shutter will experience is 389,000 pounds. By adding 20 bumpers into the inside of the side supports the impulse is translated into 15,000 pounds of force which can be absorbed more easily than if there were no bumpers. The bumpers allow the shutter to slow down over a distance rather than almost instantaneously stop with an incredibly high force. This would result in an audible bang when the shutter hits the bumpers, but no permanent damage should occur. If the bumpers were not there, the shutter could derail and become impossible to operate until the shutter was remounted, the manual drive system would be destroyed, and it is possible that some of the Medical Room blocks could shift or even break.

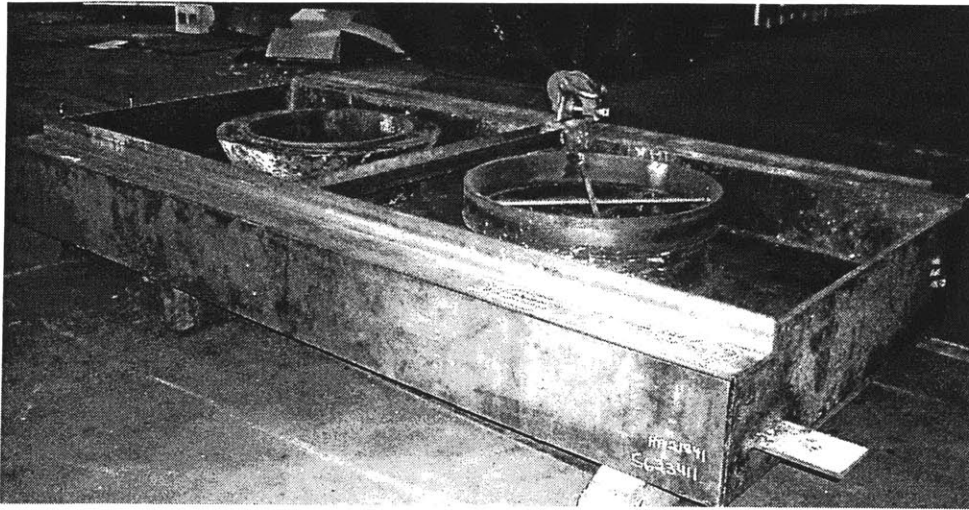
Other concerns were raised with the idea that the shutter would be moving back and fourth with a large impulse, this impulse could be dangerous. The shutter could slice and break most anything in the way because of this large impulse. The solution to this problem was to cover the area with a sheet metal to prevent objects from interfering with the shutter.

2-5 Manufacture of Shutter

For the fast shutter to become a reality a series of steps had to be carried out. The first part, the design of the shutter, was complete. The second was to engineer drawings. The drawings for the fast shutter blocks were made by Yakov Ostrovsky³, with the ongoing assistance of the author. The third task was to approach industry to get quotes for the shutter. Two companies agreed to make bids. The two companies were APEC in Hingham and Artisan Industries Inc. in Waltham. The companies needed to make the shutter and machine the bottom block. The companies came back with vastly different quotes therefore the lowest bidder got the job, APEC of Hingham.

The support block was cast in Canada at Patriot Forgings. This block was made within eight weeks of the order being placed. The block was shipped to APEC when they were awarded the bid.

APEC claimed that Patriot Forgings of Canada did not properly heat-treat the support block and therefore the support block was warping while it was being machined. They tacked on an additional fee for heat-treating the bottom block again. The designs had been changed slightly during the production of the fast shutter and the machining of the bottom block, however these changes were made before the job was begun. The shutter was manufactured with the front sheet of lead and the lead around the neutron beam port being poured at the same time. This is one of the changes that was made to the shutter when it was being manufactured. Figure 2-24 shows the shutter with the lead cone attached to the lead sheet in the front of the shutter.

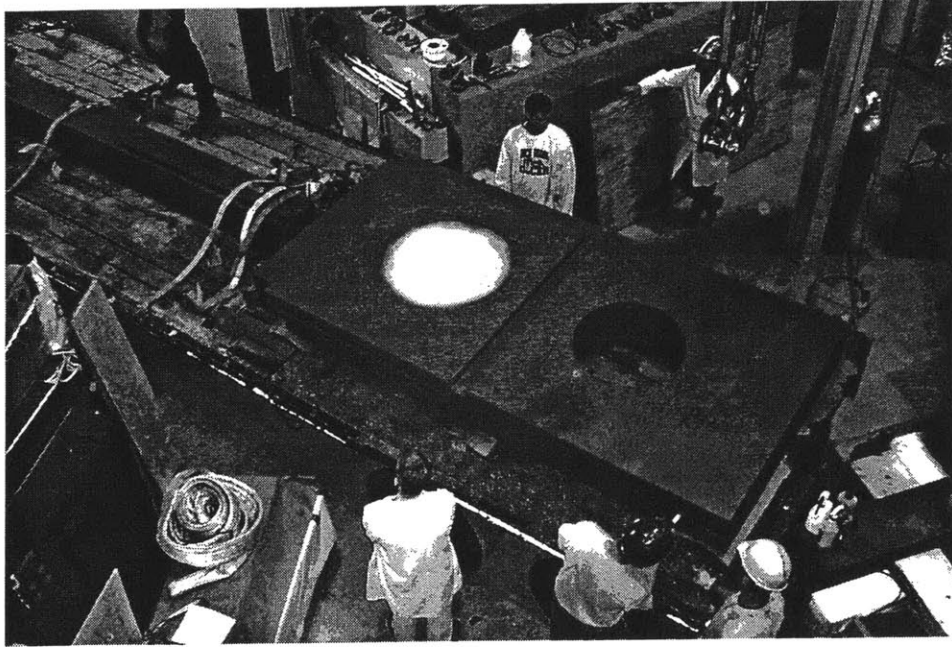


2-24 Photograph of the Shutter after the lead was cast, and before the concrete was added

Slight changes continued to be made to the shutter as design changes were made and manufacturing simplifications were being made. There should have been enough time to complete the shutter blocks, APEC was unable to deliver the shutter on time. The shutter was due to arrive at MITRII during the first half of the May shutdown of the reactor (two months after the bid was awarded). The shutter was not completed until after the May reactor shutdown, so shield blocks were placed at the opening to the cave to stop the radiation from entering the work environment and permit reactor operation.

While the shutter was experiencing delays at APEC, the engineering drawings of the side supports and the front bars that are used to connect them together were completed. This job was given to Artisan Industries Inc. of Waltham as they were already manufacturing the collimator and water shutter for the Medical Room. The side supports are not complicated pieces so they were manufactured in only four weeks and cost \$11,250. They were ready to ship to the MITRII with the collimator (this was when the shutter was due originally).

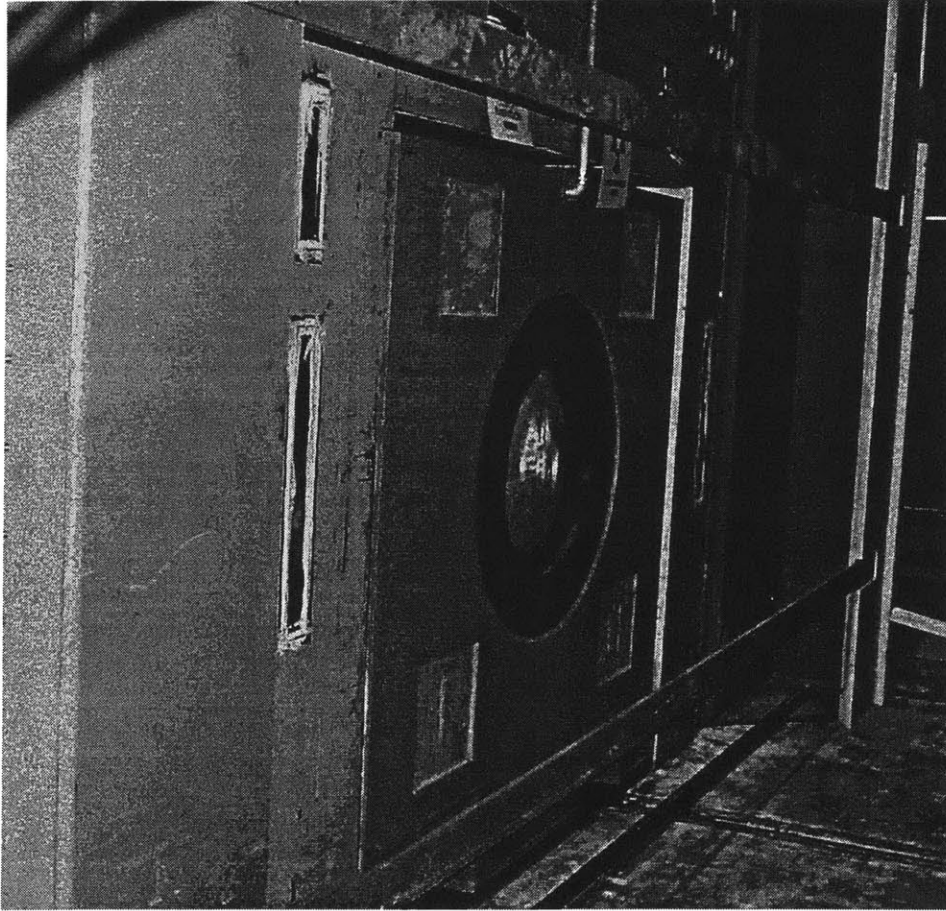
The Shutter was finally completed on June 18, two months late, for the final cost of \$7,950. A group of people from MITRII went to APEC to inspect and test the fast shutter before it was delivered. Figure 2-25 shows the Mechanical Shutter and the Support Block arriving at MITRII.



2-25 Photograph of the Shutter and the Support Block being delivered to MITRII.

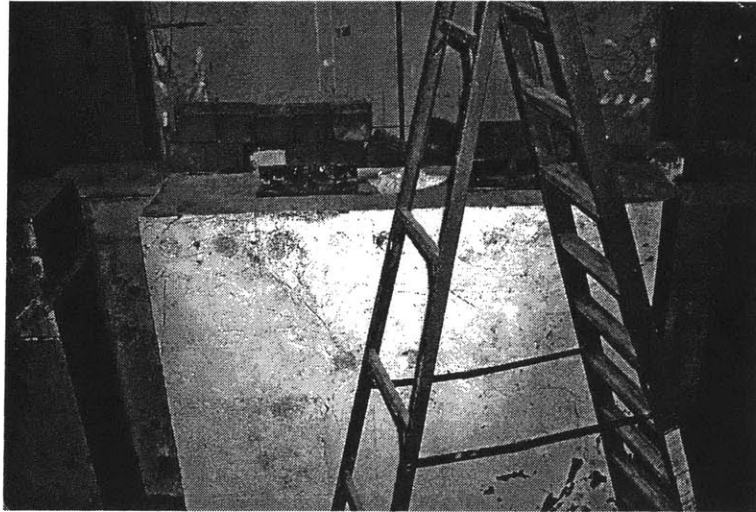
2-6 Installation of the Shutter Blocks

The side supports were completed before the shutter was completed so the side supports were brought in to the contaminant area and with the assistance of Yakov Ostrovsky, and Edward Block⁴, the side supports were installed. The ties that connect the front of the side supports and the bottom pins was connected together with a beam to hold the exact distance that the bored holes in the support block needed fore correct orientation. The supports were positioned as close to the reactor as possible to reduce the possibility of streaming or neutrons and gamma rays. It took longer than expected because the floor of the reactor room and the face of the reactor were not flat. The total time to install the side supports was approximately one day with three to four people. Figure 2-26 shows the Support System installed in front of the Collimator.



2-26 Photograph Depicting the Installed Side Supports with the Nuclear Reactor and Collimator shown behind the supports.

Once the side supports were in place, the Corner 1 and Corner 2 blocks could be poured right outside of the Side Supports. These blocks added shielding to the reactor and needed to be in place before the reactor could go back on line. These blocks used the back and side of the side supports as one of the forms and became part of the side support unit. The right side support when facing the reactor from the Medical Room needed a ventilation duct and two conduits for cabling to control the shutter and there was a pipe added to create a void to allow the drive shaft of the ball screw to pass through the wall. The shutter was not completed during the outage so blocks had to be added to the front of the collimator to add temporary shielding for the reactor (see Figure 2-27).



2-27 Photograph of the temporary shielding so that the Reactor could power up with out the Mechanical Shutter in place.

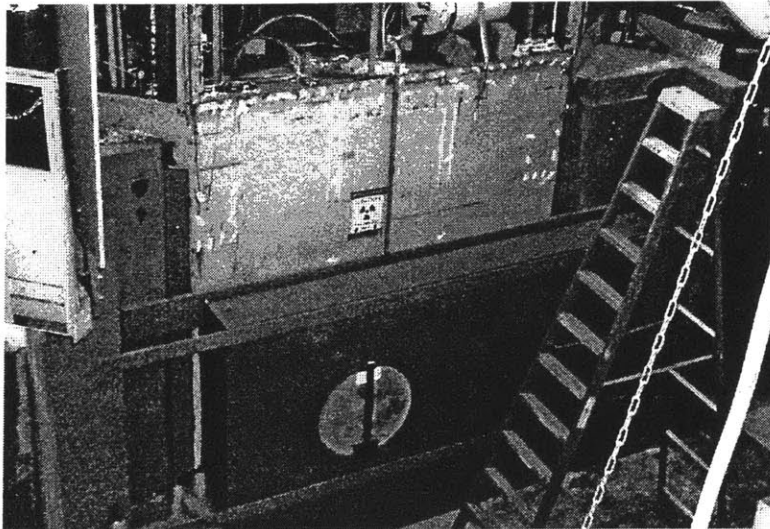
At the outage in July, the shutter was complete. After the temporary shielding blocks were removed, the support block was lifted and lowered into place between the side supports and onto the pins. The block fit well. The support block was then lifted so that high-density grout (with half iron ore dust and half cement) could be added under the block. This grout added additional support to the block between the support points. Figure 2-28 shows the Support Block installed.



2-28 Photograph of the Installed Support Block.

The bearings were attached to the shutter (as shown on Figure 2-13), which had been removed for shipping. Once the bearings were installed they were wiped down with alcohol to clean them of any contaminants. The rails on the support block were wiped down as well and lubricant was added to the bearings. The shutter was then moved into position and lowered onto the support block.

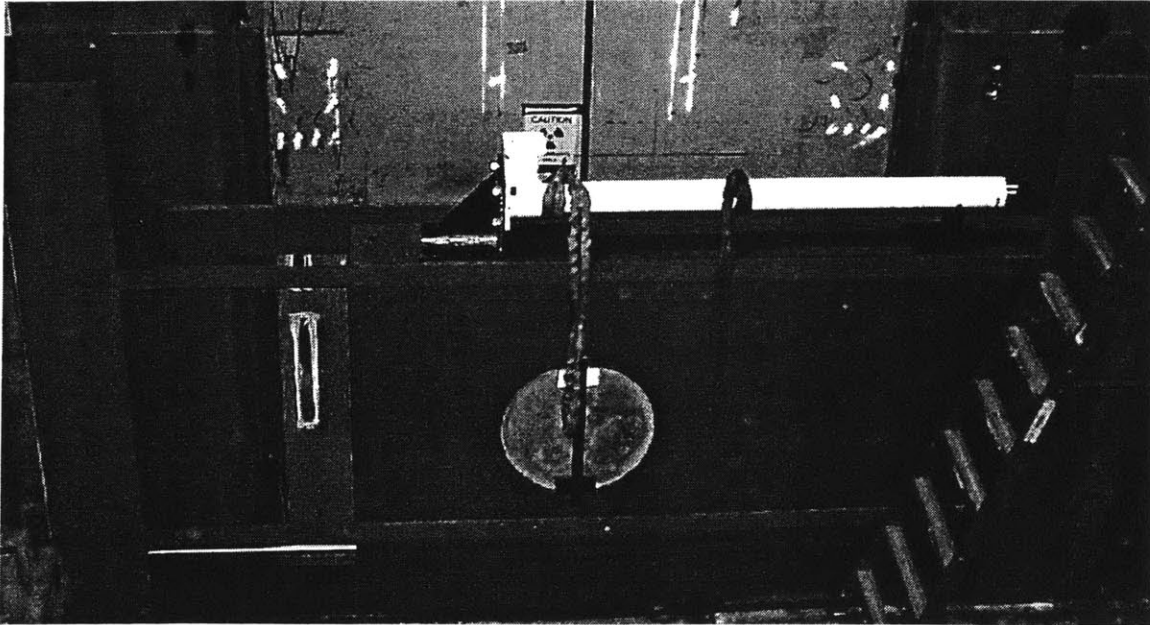
Once the shutter was installed, the back shield bars were added. In order to align and mount the bars it was necessary to add eye bolts to the top edge so that the crane could be used to support them as the holes in the reactor face were drilled and anchors were mounted. The bars were then bolted into the reactor face and the side supports. Figure 2-29 shows the Mechanical Shutter's Blocks all installed.



2-29 Photograph of the Installed Shutter System.

The shutter was then tested by pulling and pushing the shutter back and forth against the bumpers that were installed into the side supports. It is possible for one strong person to open and close the shutter without help, however since it takes about 200 lbs of force to operate the shutter it is easily done with four people. It was found that the shutter rubbed the left side support when facing the reactor from the Medical Room. This was caused by the lack of flatness of the reactor face and the floor when the side supports were being installed. In order to solve this problem the side support had to be ground down until the shutter could pass without interference. About an eighth of an inch was removed and the shutter could pass freely.

The linear actuator ball screw was then mounted using two angle brackets that were made to mount on top of the shutter. This would cradle the drive, and would have enough adjustability to align the drive in the correct location. The linear actuator is white in the following figure, while the mounting brackets are black. The mounting bracket is connected directly to the top of the Mechanical Shutter. Figure 2-30 shows the drive mounted on the Mechanical Shutter.



2-30 Photograph of the Drive System for the Mechanical Shutter mounted in place

Once the drive was mounted, it became possible to determine what force would be required to operate the shutter manually outside of the Medical Room. This was done by running up the drive to the end of the side support and measuring what torque was required to move the shutter. The resulting torque was 80 inch pounds and the force required to open the shutter was calculated to be 20 pounds of force acting on an eight inch radius.

2-7 Installation of Through Shaft for the Manual Drive System

The installation of the through shaft was done in multiple steps. First, the tubing was installed into the blocks that would form the final penetration. (See Figure 2-31 for part names)

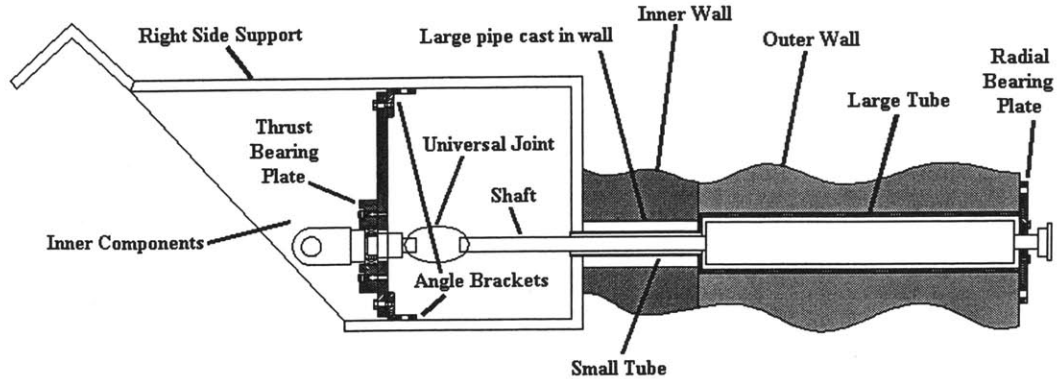


Figure 2-31 Drawing of the Through Shaft with Components Specified

Since the inner wall block (next to the right side support when viewed from the Medical Room) was already poured with a large pipe cast in it, a small tube needed to be mounted and grouted into position using a hole that was drilled into the right side support as a reference. The larger tube then can be slipped over the smaller tube with the flange acting as an interface. RTV calking then can be added around the large tube, and then the new outer wall block can be formed so the block can be poured. The outer end of the large tube should be supported from the form.

The remainder of the through shaft can be installed later when all of the parts had been manufactured. The installation process is relatively straightforward. First, the shaft is inserted into the penetration in the walls. Then the radial bearing plate is test fitted with the bearing in place to align the shaft in the center of the penetration. The positions for the anchors are marked and then the parts are removed. Once the anchors are installed, the shaft and the outer components can be installed.

The inner components are first assembled outside of the shutter cavity, then the universal joint is attached to the end of the shaft which connects the through shaft system together. By attaching the clevis to the end of the linear actuator that is mounted to the shutter, the position for the holes that mount the angle brackets to the right side support can be marked. By removing the inner assembly, the holes in the right side support can be drilled and taped. Once again, the inner assembly is mounted onto the end of the shaft and then it is connected to the drive system.

By adjusting the position of the short inner shaft, using the clearance in the drilled holes in the thrust bearing plate, the thrust bearing support, and the angle brackets, the clevis will meet the drive system. If needed the drive system could be adjusted on the shutter by using the slotted mounting brackets used on the drive mount.

The manual crank can be assembled and mounted around the end of the through shaft at almost any position because the chain can be rotated and trimmed to fit. The chain that connects the Through Shaft to the Hand Crank is used to determine the final length between the two components. When the two components are connected by the chain, the hand crank is extended until the chain is taut and the positions for the anchors are marked through the holes in the hand crank base. The hand crank is removed and the anchors are installed. Once the anchors are in place, the hand crank is mounted to the wall after the chain was installed again. Finally, a pin with a spring-loaded ball is put into the hole of the hand crank arm that fits into the hand crank lock. At this point, the drive system can be tested and the manual system to operate the “Fast” Mechanical Shutter can be tested and used.

2-8 Testing

Testing of the shutter was performed at APEC and at MITRII. The testing at APEC was to ensure that the shutter fit together with the support block so that there was little or no overlap between the front and back planes of the two pieces with the bearings attached. While the shutter was mounted to the support block, a starting force test was performed. It took only 200 lbs force to start the shutter rolling. The shutter was measured to determine the as-built dimensions. The overall height of the shutter determines the height of the lentil blocks for the Medical Room.

2-9 References

1. Sutharshan, Balendra, “Engineering Design of a Fission Converter-Based Epithermal Beam for Neutron Capture Therapy”, PhD. Thesis, MIT, 1998
2. White, Jerry R., “Conceptual Engineering Designs for a Mechanical Shutter, a Medical Room Door, and a Water Shutter for a Fission Converter-Based Boron Neutron Capture Therapy Medical Facility”, Mechanical Engineering Thesis, MIT 1999

3. Ostrovsky, Yakov, Personal Communication November 1998 through October 1999
4. Block, Edward, Personal Communication November 1998 through October 1999

Chapter 3

Medical Room Door

3-1 Introduction

The door to the Medical Room is the last line of defense from unwanted neutrons and gamma radiation escaping into occupied areas of the building. The door needs to be operated quickly within 30 seconds to open or close and needs to have a manual override so if the electrical mechanism fails it is possible to open or close the door manually. The door should take up as little space as possible and must reduce the radiation to safe levels outside of the room. The door is approximately 16 tons, so the support for the door will be designed to take the loading while minimizing the floor space consumed by the support.

3-2 Problem Statement

The door to the medical room needs to be designed, and built. Along with the door, the frame needs to be designed and analyzed for stresses to prevent the possibility of mechanical failure of the support beams. Trolleys need to be selected for the overhead frame and a drive mechanism needs to be found and acquired. The door and frame need to be assembled and installed in the Medical Room so that minimal radiation is allowed to pass out of the medical room. Then the system must be tested so that the door can be deemed safe for the staff of MITRII and the Medical Room will not be compromised while using the door or the medical facility. A manual backup for the drive mechanism is required in case of power or mechanical failure. Safety concerns need to be addressed to prevent injury. The floor to the Medical Room needs to be designed for minimal radiation to pass under the door, while maintaining a smooth floor contour.

3-3 Previous Work

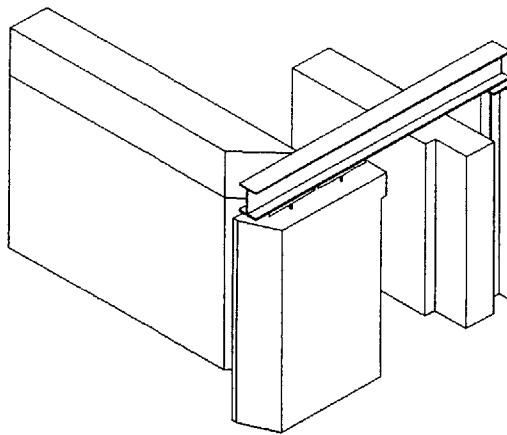
The plan for the door for the Medical Room went through many iterations in the conceptual design. The possible ways the door would work included hanging it either from one or both sides, sliding the door outward away from the Medical Room, and

hanging it on an overhead rail and sliding it perpendicular to the Medical Room hall. The details of these designs can be found in Jerry White's Thesis.¹ The conclusion of Jerry White's Thesis was to build the door so it slid perpendicular to the Medical Room hall. M.N. Ledesma worked on her Masters Thesis on the shielding work of the Medical Room. Her work helped to determine what was required of the Door to the facility.²

3-4 Design Process

3-4-1 Medical Room Door

In order to position the door so that it could slide perpendicular to the Medical Room hallway, a support beam was placed directly above the path of the door. The obvious solution to this problem was to place a support on the reactor side of the door and on the far side of the beam on the wall of the containment building (see Figure 3-01). This idea was thought through and debated.

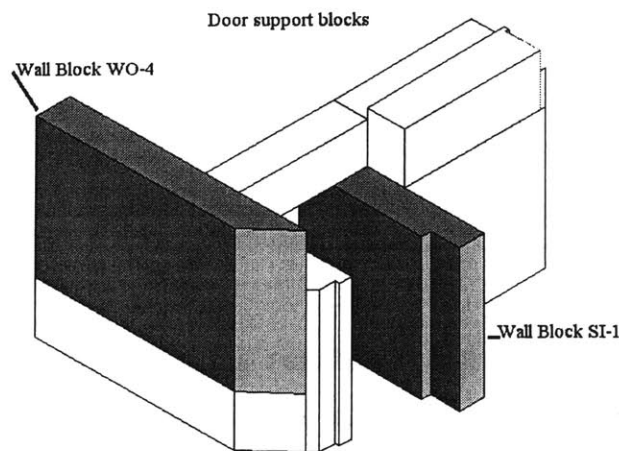


3-01 Drawing of the original support system with a post, the mount to the containment wall is not shown for clarity

Plant Services at MIT was consulted and they suggested we talked to CBI Consulting³ for further assistance. CBI came back with a plan to mount the beam to the wall as we had asked them. However, while they were working on the problem concerns arose about the D2O lines that were in line with the path of the door. CBI also was asked to determine the max possible point loading on the first floor of the containment building. CBI came back with a report stating that the floor could handle a load of 1,000 pounds force per

square foot, and 11,700 pounds for a concentrated load for the specified condition described in the appendix. Refer to Appendix A3-1 for CBI Consulting Inc.'s report.

In order to support the beam, either the lines would have to be cut and moved, or another beam would have to be added which avoided the D2O lines, or a new solution envisioned. A second vertical beam would support this end of the beam; but it would take up space in the narrow hallway. A design was created that would cantilever off one of the existing wall blocks (block WO-4) and would support the end of the beam that would carry the door (see Figure 3-02). This brought up the idea to use the other wall block, (block SI-1) to carry the load of the operator side of the main I-beam, this would remove the vertical beam that would be taking up valuable floor space in that area.



3-02 Drawing of the supporting wall blocks for the support system for the Medical Room Door.

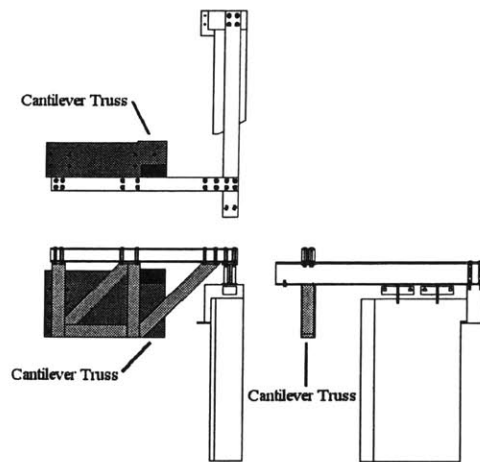
Replacing the cantilevered beam with rails mounted on the floor was considered. This would result in effect; act as speed bumps on the floor. These “speed bumps” would not be appropriate in this medical facility.

Variations of cantilever beam

The cantilever beam support system was designed to prevent using the outer wall as support for the door. The design was as a large upside-down L shaped structure with ribbing to give it support. An I-beam would be placed on top of the stem of the L and this would be the cantilevered beam. The structure would be made out of a plate 0.75 inches thick. The structure would then be mounted with bolts through a Medical Room block so that they were placed under shear forces rather than normal forces. It was

designed this way because concrete anchors tend to pull out after a long time of high loads, and especially under cyclical loading. This was structurally acceptable, however it would be expensive for it would involve a lot of welding.

The next iteration was to replace the structure with a truss of I-beams (Figure 3-03 shows the part that is being discussed). This would be less expensive to build and would increase the strength and rigidity of the system, but it would be difficult to mount to the wall.



3-03 Schematic of the Cantilever Truss

The solution was to weld the truss to a plate of 0.75 inches of metal and mount it with bolts. This design was acceptable as well, however the number of bolts required to hold the system to the wall with the door in the furthest open position would be excessive. To reduce the need for through bolts the sheet of metal would be bent creating a back plate, the struts would be attached to a structural resembling an upside-down U or a saddle with squared off corners. This would accommodate the entire downward loading of the door and the additional amount due to the geometry of the cantilever, however 3 bolts would still be required on the far side of the saddle to prevent the door from settling to the floor.

For the saddle to support the required weight, a weld for joining the outer sheet to the top sheet would not be adequate. Bending the sheet was considered as that it would retain much of its strength. However to bend a 0.75 inches piece of sheet metal with an inch inside radius the thickness of the sheet metal would be fifty-eight hundredths of an inches thick. This should be adequate to support the loads, however to add safety to the system a 0.75 inches thick angle bar will be welded to the joint. This would be necessary

to prevent a tear from forming and eventually propagating down the length of the saddle and resulting in failure of the door at the floor. Refer to Appendix A3-2 for the calculation of the factor of safety for the Saddle component of the Medical Room Door Support System.

Changes to the cantilever system were made to make installation of the support easier. By replacing the through bolts that hold down the cantilever with anchored bolts so that alignment ceases to be a problem. This solved an installation problem because drilling through straight holes with a tolerance of an eighth of an inch would be time consuming and difficult.

The concept of the overall door support design was created first. Then the maximum deflection was defined which defines the materials to be used. The proper I-Beams to use in the construction of the support system was determined this way. The deflection of the door was then calculated along its travel with the Main I-beam and the Cantilever I-beam as being the main influences in the deflection of the I-beam. Refer to Appendix A3-3 for the calculations that determined the deflection of the Medical Room Door. The number of bolts was decided upon a similar process, but in this case, the maximum impact of the door was calculated and then that force was translated to pulling and shearing of the bolts. Refer to Appendix A3-4 for the bolt sizing and placement for the Saddle for the Medical Room Door Cantilever Beam. The number of Bolts was verified using a vendor's program. The bolt anchors were decided upon.

The operator side support is a concrete block wrapped in steel. This block is mounted to the wall next to the operators and is bolted down to the wall with the use of concrete anchors. The use of anchors here is not a problem since they will only be used for shear loading and not tension. The main I-Beam will attach to this support locking the door system together.

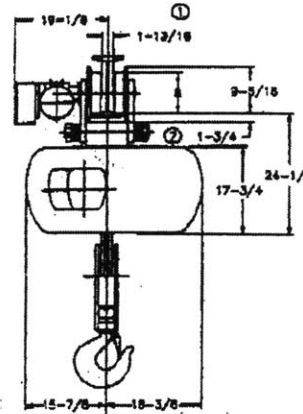
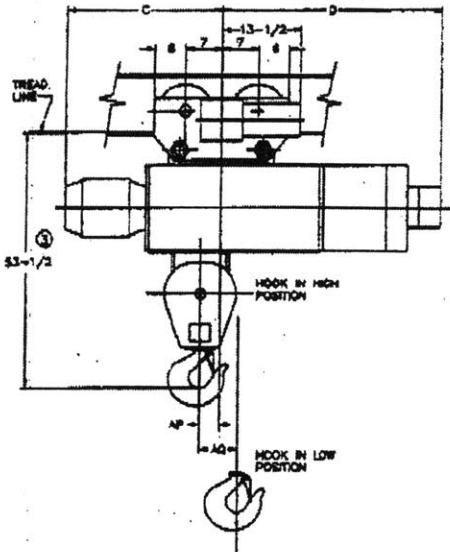
Drive systems for the Medical Room door that were considered included chain drives, liner actuators and pneumatics, but a combination drive and trolley system was finally chosen. This system was one of the cheaper options and was simple to integrate in to any overhead track design. To implement a manual backup opening system, a winch would be used to open and close the door in the case of an emergency. If the

winch was unable to overcome the motor, then a clutch would be added so that the drive could be disconnected from the trolley so the winch could operate as designed.

The following drawings in Figure 3-04 were faxed from Sissco of Summerville NJ, a vendor of Budget Electric Hoists and Trolleys. The only part that would be required would be the trolley, and not the hoist that is attached to the system in the drawings. The quoted parts that would be required is two 115491-3.

SHAW-BOX® Electric Wire Rope Hoists

700 SERIES	15 TON	SINGLE REEVED	MOTOR DRIVEN TROLLEY
-----------------------	-------------------	--------------------------	---------------------------------



SISSCO
 186 Route 206 South
 Somerville, NJ 08876
 800-392-0146 Fax: 908-359-9773

MINIMUM STANDARD RADIUS: 12'-0". FOR SMALLER RADIUS CONTACT FACTORY

CATALOG NUMBER	HOIST				TROLLEY		WEIGHT (LBS)	C	D	AP	AQ	ESTIMATED WHEEL LOAD*	
	MAX LIFT (FT)	HOIST SPEED (FPM)	HP	ROPE NO & DIA	SPEED (FPM)	HP						HIGH HOOK (LBS)	LOW HOOK (LBS)
73M15-014S13-1	14	13	15	6-9/16	45	3/4	2510	28-5/8	33-3/4	7/8	2-3/4	10363	11626
73M15-014S13-2	14	13/4.3	15/5	6-9/16	45	3/4	2750	29-7/8	33-3/4	7/8	2-3/4	10459	11692
73M15-024S13-1	24	19	15	6-9/16	45	3/4	2855	30-1/8	43	3-1/2	4-3/4	13723	10950
73M15-024S13-2	24	13/4.3	15/5	6-9/16	45	3/4	3105	33-3/8	43	3-1/2	4-3/4	15791	11019

Weights shown are for standard hoists listed. For approximate shipping weights, add 110 lb. to the net weight given. Consult factory for weights of special hoists. Dimensions shown are in inches unless otherwise noted.

When used on smallest I-beam size, beam must be free of all obstructions, such as clips, suspension bolts, and nuts. Trolleys for wide flange beams refer to Optional Equipment.

Trolley beam size range - beam flange width 6" min., 8-1/2" max; beam depth 16" min. standard, 8-5/8"-11-1/8" with 1st extension, 11-1/4"-13-3/4" with 2nd extension. See Optional Price section for extension pricing.

① Occurs on smallest beam size only. On larger beams, it is increased by the difference in flange width.

② Clearance shown is between lug and wheel tread.

③ Dimension increases 9" when hoist is equipped with screw type limit switch.

* Estimated wheel load per one (1) wheel. Includes live and dead load impacts.

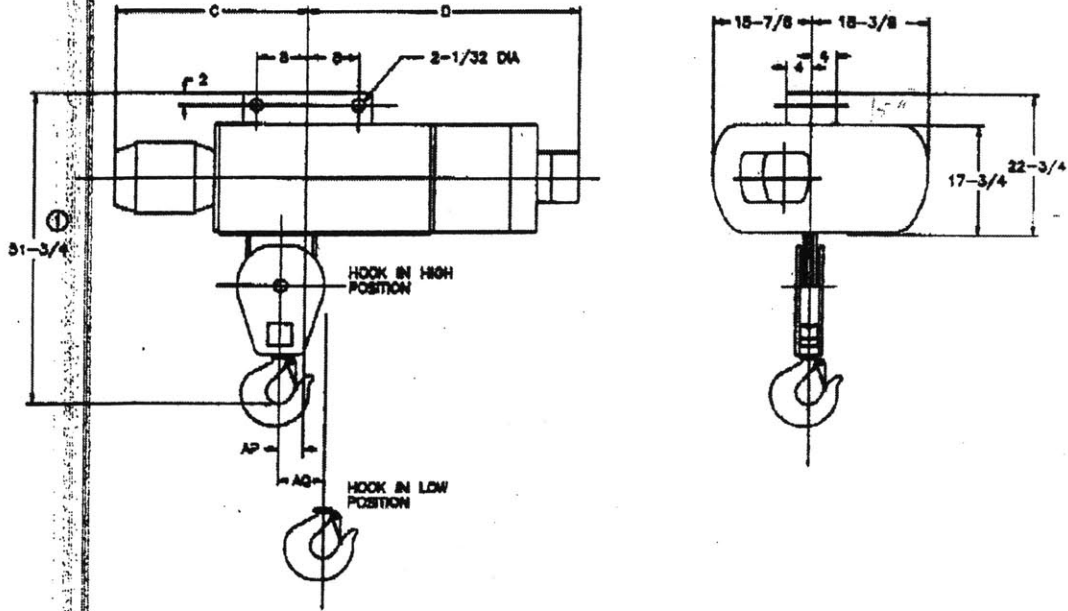
SHAW-BOX, Electric Wire Rope Hoists

700
SERIES

15
TON

SINGLE
REEVED

LUG
SUSPENSION



CATALOG NUMBER	HOIST				WEIGHT (LBS)	C	D	AP	AQ
	MAX LIFT (FT)	HOIST SPEED (FPM)	HP	ROPE NO & DIA					
73L15-01-S13-1	14	13	15	6-9/16	1860	26-5/8	33-3/4	7/8	2-3/4
73L15-02-S13-2	14	13/4.3	15/5	6-9/16	2100	26-7/8	33-3/4	7/8	2-3/4
73L15-03-S13-1	24	13	15	6-9/16	2215	30-1/8	43	3-1/2	4-3/4
73L15-04-S13-2	24	13/4.3	15/5	6-9/16	2455	33-3/8	43	3-1/2	4-3/4

Weights shown are for standard hoists listed. For approximate shipping weights, add 110 lbs. to the net weight given. Consult factory for weights of special hoists. Dimensions shown are in inches unless otherwise noted.

⊕ Dimension increases 3" when hoist is equipped with screw type limit switch.

Post-It® Fax Note 7871

Date 6/30/99

To Bill CARSON

From RAY M

Co./Dept MET

Co. SISSCO

Phone # 617 255 5720

Phone # 908 359 9767

Fax # 7306

Fax # 9773

3-4-2 Manual Backup Drive System

Manual backup was required to access a patient inside the Medical Room in case of a power failure. The manual backup consists of a winch that is mounted to the outside of the door to the Medical Room. This winch can be attached to two eyebolts to operate the door manually. The two eyebolts would be mounted on the containment wall of the reactor, and on the wall between the operators and the door.

3-4-3 Safety Concerns

The door required presence sensor bumpers so the drive system could be shut off if some one or some thing got in the way of the door's operation. Two presence detectors located above the door were installed to add a second level of safety to the system.

3-5 Installation of the Door Support System

The saddle for the door support and the inner support were the first two parts mounted. The inner support could be lined up and marked where the anchors are to be drilled into the wall (block SI-1). A line will be drawn on the ground across the hall paralleling where the main I-beam will be so that the position of the saddle can be determined. Once this line had been drawn, a plum bob can be used to determine the correct positioning for the saddle. Once the saddle is in place, the points where the bolts are anchored can be transferred to the wall (block WO-4).

3-6 Floor to the Medical Room

To avoid streaming of neutrons and gamma rays from under the door, the floor of the Medical Room either must have a speed bump, or have a ramp and raised floor. Since a speed bump is an unpleasant obstacle for people and equipment to transverse, a raised floor with a ramp made the most sense. Using a spreadsheet that Kent Riley⁴ developed it was possible to examine different levels and ramps to determine the best ramp design for the best shielding and easiest ascent. It turned out that a ramp 11 inches long, with an inch rise, while the crack under the door to the Medical Room will nominally be 0.36 inches is required. Refer to Appendix A3-5 for the calculations on the geometry of the ramp and the crack under the door to the Medical Room.

3-7 References

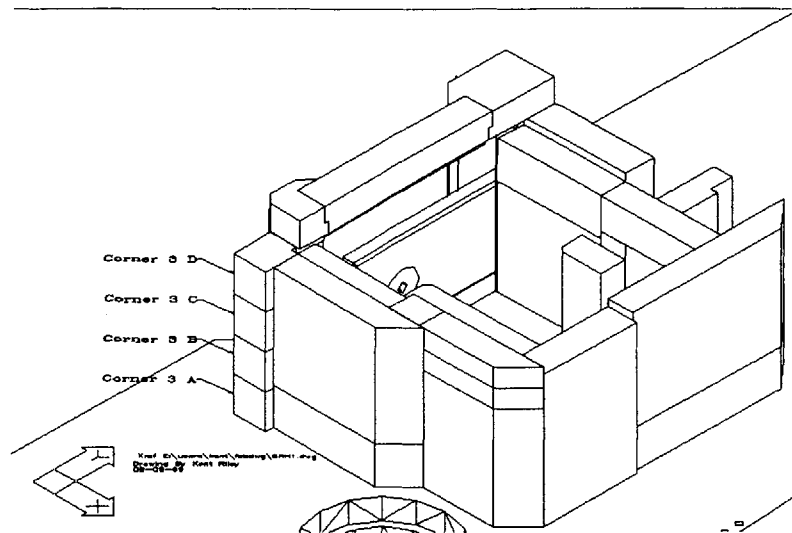
1. White, Jerry R., "Conceptual Engineering Designs for a Mechanical Shutter, a Medical Room Door, and a Water Shutter for a Fission Converter-Based Boron Neutron Capture Therapy Medical Facility", Mechanical Engineering Thesis, MIT 1999
2. Ledesma, M.N., "Medical Room Design for a Fission Converter-Based Boron Neutron Capture Therapy Facility", M.S. Thesis, MIT, 1998
3. CBI Consulting, of 12 Farnsworth St, Boston, MA 02210-1276
4. Riley, Kent Personal Communication November 1998 through October 1999

Chapter 4

Strength of the High Density Concrete Blocks Manufactured by the Fission Converter Beam Project Staff

4-1 Background

On June 17, 1999, the first of three blocks for the Fission Converter Beam Medical Room was formed and poured in the parking lot of MITRII. The mix for the concrete was 38 lbs of water, 930 lbs of iron ore aggregate and one bag of concrete with one bottle of thinner solution. This mix formula was used for all of the concrete blocks produced at MITRII between that date and the present. The first block to be poured was the corner block “Corner 3 A”, which was poured on the 17th of June 1999. The second block to be poured was “Corner 3 B”, which was poured on the 24th of June and the third block, which was “Corner 3 C”, which was poured on the 16th of July. See Figure 4-01 for the location of these blocks.



4-01 Schematic of the Medical Room with the Corner 3 Blocks Labeled

These blocks are located at the corner of the Medical Room next to the 6RH1 port. There were five samples taken, one 6” diameter cylinder (sample A2) and one 4” diameter cylinder (sample A1) were taken from block Corner 3 A, one 6” diameter cylinder (sample B1) was taken from block Corner 3 B, and two 4” diameters cylinder (sample C1 and C2) were taken from block Corner 3 C. The testing equipment that tests for the

strength of the larger samples was not in operating condition at this time and the tests where performed in August, see the Section 4-2.

4-2 Testing

On August 10th, the samples from the three small 4" diameter samples were tested to discover their yield point in compression. The equipment that was used to test the samples had a table with a hydraulic ram positioned above. When the sample was placed below the ram, the ram slowly increased force pushing on the sample until the sample broke. The highest force was measured, this force was used to calculate the concrete strength. The yield forces for the small samples (A1, C1, C2) were (60.47 Kip, 58.76 Kip, approximately 50 Kip). The reading for C2 was the last visual sighting of the display before the final destruction of the block was reached. The equipment was not reset so the data was not stored appropriately. To determine the strength of the concrete the pressure was found by dividing the force by the surface area of the cross-section of the cylinder. The resulting strengths were: A1 = 4812 psi, C1 = 4676 psi, C2 ≥ 3978 psi after 61 days for sample A, and 25 days for sample C. Since these measurements where not taken 28 days after the pouring of the concrete a conversion was used to generate their 28 day strengths. Refer to Appendix A4-1 for the calculations for the strength of the concrete samples. The 28 day strengths for the concrete samples are: A1 = 4487 psi, C1 = 4745 psi, C2 = 4037 psi. Steve Rudolph¹ helped the laboratory in running the test equipment. John T. Germaine² reviewed the work that was done for these tests and assisted throughout the process.

The strength of concrete is generally divided into three categories, low, medium, and high strength. Low strength concrete measures below 2000 psi, and is generally used when it supports a low weight, or it is fully supported, such as a sidewalk. Medium strength concrete measures around 4000 psi. High strength concrete measures upward of 6000 psi, and is used for overhangs and areas that are expected to be under high loads. The concrete that MITRII workers produced is a bit above medium strength concrete. This material would be acceptable for use in the roof design that was proposed for the medical room, which called for 3000 psi concrete.

4-3 References

1. Steve Rudolph, a Technical Assistant for the department of Civil and Environmental Engineering Department at MIT
2. John T. Germaine, Principal Research Associate for the Department of Civil and Environmental Engineering at MIT

Summary

The goals of this thesis were the design, manufacture and instillation of the “Fast” Mechanical Shutter, the parts for the manual drive system and the through shaft for the Mechanical Shutter, and the design for the support mechanism for the Medical Room Door.

The design of the Mechanical Shutter system that incorporated the Upper Block with the Shutter was a major simplification for the overall system. Without this simplification, it would have been complicated and expensive to drive the shutter.

Once the design of the Mechanical Shutter decided, it was necessary to determine how the shutter could be operated when and if there was a power failure. The solution to this problem was to put a hole in the shielding of the Medical Room for a shaft to penetrate the wall, to be used as a screw shaft in an emergency to operate the door.

Once it was decided to use a cantilever, the team had many options available, which did not interfere with the current containment building. The other possibilities for the support systems of the Medical Room Door were intrusive, or looked to be very complex and difficult to integrate. The cantilever beam was not easy to analyze and to determine materials for the design, but it did have the advantages of being easy to install using no space on the floor and allowing the main I-beam to remain within the containment wall.

To repeat this work, I would make an early effort to learn the computer aided drafting package that was used at MITRII. This package is AutoCAD¹ by AutoDesk, Inc.

¹ AutoCAD a program by AutoDesk, Inc

References

Textbooks

Beer, F. P. and Johnston, E. R., Mechanics of Materials Second Edition, McGraw-Hill, Inc. Copyright 1992

Hibbeler, R. C., Engineering Mechanics Dynamics Seventh Edition, Prentice-Hall, Copyright 1995

Other Text Sources

Ghal, A. and Favre, R., Concrete Structures: Stress and Deformations Second Edition, E&FN Spon 1994

Kiger, William Steadman, "Neutronic Design of a Fission Converter-Based Epithermal Beam for Neutron Capture Therapy", Nuclear Engineering Thesis, MIT, 1996

Ledesma, M.N., "Medical Room Design for a Fission Converter-Based Boron Neutron Capture Therapy Facility", Nuclear Engineering Thesis, MIT, 1998

Locher, G.L., "Biologic Effects and Therapeutic Possibilities of Neutrons," Am. J. Roentgenol., 36:7 1936.

"Thomson Linear Guides, Catalog No. 1400-98A", Thomson Industries, Inc. 1998

White, Jerry R., "Conceptual Engineering Designs for a Mechanical Shutter, a Medical Room Door, and a Water Shutter for a Fission Converter-Based Boron Neutron Capture Therapy Medical Facility", Mechanical Engineering Thesis, MIT 1999

Personal Communication

Campos, Tarcisio, Personal Communication November 1998 through January 1999

Catella, Ron, Personal Communication January 1999 through February 1999

Germain, John, Personal Communication July 1998 through August 1999

Griffith, Peter, Personal Communication November 1998 through October 1999

Harling, Otto K., Personal Communication November 1998 through October 1999

Menadier, Pall, Personal Communication November 1998 through October 1999

Ostrovsky, Yakov, Personal Communication November 1998 through October 1999

Riley, Kent Personal Communication November 1998 through October 1999

Rudolph, Steven, Personal Communication July 1998 through August 1999

Stahle, Peter, Personal Communication November 1998 through October 1999

Other Sources

AutoCAD a program by AutoDesk, Inc

CBI Consulting, of 12 Farnsworth St, Boston, MA 02210-1276

Hilti is a leader in the cement anchor business.

<http://www.hilti.com/eng/sub/download/hidu-info.asp> (as of October 20, 1999)

Appendix

A2-1 Calculations to Determine the Geometry of the Front Bars

A2-2 Information of the Bearings used for the Mechanical Shutter

A2-3 Calculations of the Center of Mass for the mechanical Shutter

A2-4 Calculations to Determine the Deflection of the Mechanical Shutter

A2-5 Calculations of Force to Operate the Through Shaft

A3-1 CBI Consulting Inc.'s Report on Floor Loading

A3-2 Calculations of Factor of Safety for the Saddle component

A3-3 Calculations to Determine the deflection in the Medical Room Door

A3-4 Equations to Determine the Number and Size of Bolts to Mount the Saddle for the
Medical Room Door Cantilever Beam

A3-3 Calculations to Determine the Geometry of the Ramp and the

A3-5 Calculations to Determine the Geometry of the Ramp and the Door crack for the
Medical Room

A4-1 Supplemental Equations to the Strength of the Corner 3, Blocks

A2-1 Calculations to Determine the Geometry of the Front Bars

The Mechanical Shutter should never tend to tip over, however if the shutter should tip to the point where it touches the Front Bar there will be a force of 109 pounds force pushing it further over. Since the center of mass has not passed the edge of the base, there is a greater force to return the shutter to its proper place. This force is 28,000 pounds force. If the shutter were to apply a force of 109 pounds, it would bend the Front Bar by 0.75 inches which is well within parameters for the structural integrity of the bar.

$$\text{Shutter_wt} := 28000 \text{ lbf}$$

$$\text{Shutter_height} := 64.25 \text{ in}$$

$$\text{Shutter_tip_horizontal_distance} := 0.25 \text{ in}$$

$$\text{Shutter_tip_ang} := \text{atan}\left(\frac{\text{Shutter_tip_horizontal_distance}}{\text{Shutter_height}}\right)$$

$$\text{Bending_force} := \text{Shutter_wt} \cdot \sin(\text{Shutter_tip_ang})$$

$$\text{Force_down} := \text{Shutter_wt} \cdot \cos(\text{Shutter_tip_ang})$$

$$\text{Force_down} = 2.8 \cdot 10^4 \text{ lbf}$$

$$\text{Bending_force} = 108.949 \text{ lbf}$$

$$E = 29 \cdot 10^6 \frac{\text{lbf}}{\text{in}^2}$$

$$\text{Front_bar_height} := 4 \text{ in}$$

$$\text{Front_bar_depth} := 0.75 \text{ in}$$

$$\text{Front_bar_length} := 156 \text{ in}$$

$$I = \frac{1}{12} \cdot \text{Front_bar_height} \cdot \text{Front_bar_depth}^3$$

$$\text{Shutter_length} := 132 \text{ in}$$

$$\text{Side_support_depth} := 16 \text{ in}$$

$$a := \text{Shutter_length} - \text{Side_support_depth}$$

$$b := \text{Front_bar_length} - a$$

$$\text{Max_deflection} := \frac{0.5 \cdot \text{Bending_force} \cdot b \cdot (\text{Front_bar_length}^2 - b^2)^{\frac{3}{2}}}{9 \cdot 3^{0.5} \cdot I \cdot E \cdot \text{Front_bar_length}}$$

$$\text{Max_deflection} = 0.753 \text{ in}$$

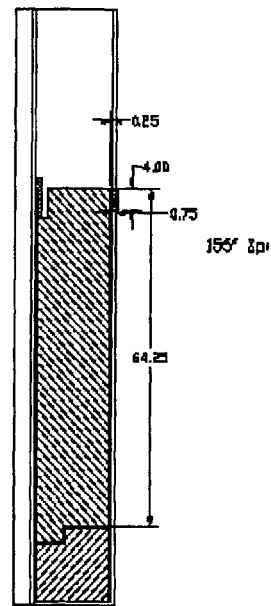
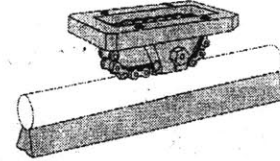


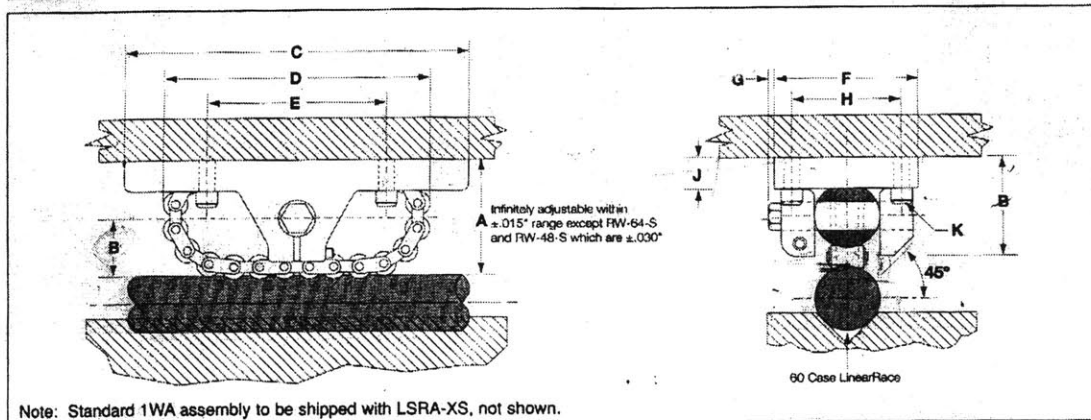
Figure A2-01 Cross-Section of the Mechanical Shutter Blocks and Bar

A2-2 Information of the Bearings Used for the Mechanical Shutter

RoundWay 1WA Linear Guide #11 Single Type Contaminated Environments, High Shock Loads



INCH



Part Number	Type of Support ¹	Nom. Dia.	RoundWay Linear Guide 1WA (Single Type) and 60 Case LinearRace [®] Shaft													Dimensions in inches			
			A	B	C	D	E	F	G	H	J	K	L	60 Case LinearRace Diameter d	60 Case LinearRace Maximum Length	60 Case Solid LinearRace lb/in	Bearing Mass lb	Dynamic ⁽²⁾ Load Capacity lb _f	
1WA-06-WAO	LSRA08-XS	.500	1.00	.45	3.0	2.38	1.50	1.25	.19	.94	.31	#6	.16	.88	.4995/.4990	188	.06	.50	970
1WA-16-WAO	LSRA16-XS	1.000	1.75	.80	5.0	3.75	2.50	2.13	.25	1.63	.50	#10	.25	1.50	.9995/.9990	180	.22	2.20	3020
1WA-24-WAO	LSRA24-XS	1.500	2.50	1.15	8.5	5.38	3.50	2.88	.31	2.18	.63	#12	.38	2.13	1.4994/1.4989	204	.50	5.50	6020
1WA-32-WAO	LSRA32-XS	2.000	3.25	1.50	11.0	7.38	4.50	3.63	.38	2.75	.75	#14	.44	2.88	1.9994/1.9987	204	.89	12.40	12360
1WA-48-WAO	LSRA48-XS ⁽³⁾	3.000	5.00	2.30	17.0	11.00	7.00	6.00	.50	4.25	1.25	#18	.69	4.25	2.9992/2.9983	204	2.00	46.00	24000
1WA-64-WAO	LSRA64-XS ⁽³⁾	4.000	6.50	3.00	23.0	14.88	9.00	7.75	.50	5.50	1.50	#20	.81	5.88	3.9988/3.9976	204	3.56	105.00	48000

⁽¹⁾ Dynamic Load Capacity is based on 10 million inches of travel.
⁽²⁾ Contact factory for availability.
⁽³⁾ Other supports available as special options, see next page.

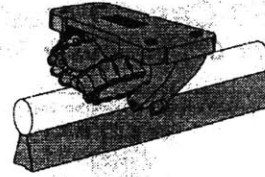
For more information, or to place an order, please contact your local authorized Thomson distributor or Thomson Industries, at 1-800-55-4-THOMSON, Fax: 1-800-445-0329, or E-mail at linearguides@thomsonmail.com.

RoundWay 1WA

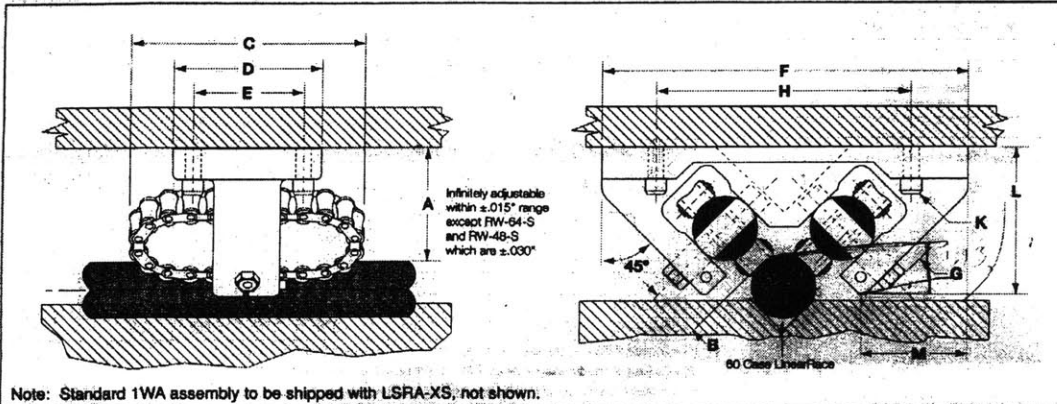
Linear Guide #11

Dual Type

Contaminated Environments,
High Shock Loads



INCH



Part Number	Type of Support ¹	Nom. Dia.	A	B	C	D	E	F	G	H	J	K		L	M	60 Case LinearRace Diameter d	60 Case LinearRace Maximum Length	60 Case Solid LinearRace l _{in} /in	Bearing Mass lb	Dyn. ² Load Cap. l _b
												Bolt	Hole							
1WA-16-VAO	LSRA16-XS	1.000	1.75	.80	2.25	3.75	1.63	5.75	.25	4.0	.50	#10	.25	2.38	1.56	.9995/.9990	180	.22	4.90	4300
1WA-24-VAO	LSRA24-XS	1.600	2.50	1.15	2.75	5.38	2.00	7.88	.31	5.0	.83	#11	.38	3.38	2.13	1.9994/1.9989	204	.50	11.20	6000
1WA-32-VAO	LSRA32-XS	2.000	3.25	1.50	3.50	7.38	2.50	9.75	.38	7.5	.75	#12	.44	4.38	2.50	1.9994/1.9987	204	.89	25.20	17500
1WA-48-VAO	LSRA48-XS	3.000	5.00	2.50	5.50	11.00	4.00	18.50	.63	12.0	1.25	#14	.69	7.00	4.25	2.9992/2.9985	204	2.00	60	30000
1WA-64-VAO	LSRA64-XS ³	4.000	6.50	3.00	7.00	14.88	5.00	19.25	.75	15.0	1.50	#16	.81	8.63	5.00	3.9988/3.9976	204	3.56	198	70000

¹ Dynamic Load Capacity is based on 10 million inches of travel.

² Contact factory for availability

³ Other supports available as special options, see next page

For more information, or to place an order, please contact your local authorized Thomson distributor or Thomson Industries, at 1-800-55-4-THOMSON, Fax: 1-800-445-0329, or E-mail at linearguides@thomsonmail.com.

Section # 11
Page 134



The specifications and data in this publication are believed to be accurate and reliable. However, it is the responsibility of the product user to determine the suitability of Thomson products for a specific application. While defective products will be replaced without charge if promptly returned, no liability is assumed beyond such replacement.

* Trademark of Thomson Industries, Inc. THOMSON is registered in the U.S. Patent and Trademark Office and in other countries.

2

Bearings used: 1WA-32-WAO, 1WA-24-VAO, 1WA-32-VAO

² "Thomson Linear Guides, Catalog No. 1400-98A", Thomson Industries, Inc. 1998

A2-3 Calculations of the Center of Mass for the Mechanical Shutter

To calculate the center of mass for the shutter, it was divided into simpler subsections. There were both positive shapes that take up volume and negative shaped that remove volume from the positive shapes. Then by calculating their weights and distances from the front of the lead sheet, it was possible to take the product of each shape's weight multiplied by the distance and divide it by the total weight of the shutter to yield the distance the center of mass is from the front of the lead. Then to add 0.75" to the answer will yield the distance the center of mass is from the front of the shutter's surface. The resulting distance is 6.15" from the front face of the shutter. The total calculated mass for the shutter is 30,176 lbs of force.

Positive + Negative - Area	volume (in ³)	Specific Wt (lbs/in ³)	wt (lbs.)	Distance to front of Pb. (in)	wt * Distance
+ Pb. Lens Cyll.	9698.09	0.412	3994.16	7.125	28458.37
+ Pb. Lens Tip	44.77	0.412	18.44	-1.18125	-21.78
- Pb. Lens Hole	-192.97	0.412	-79.48	10.63125	-844.92
+ Pb. Closed Position	2814.86	0.412	1159.30	5.75	6665.99
+ Pb. Shield	31189.50	0.412	12845.40	2	25690.79
- Pb. hole Lens	-2463.01	0.412	-1014.39	2	-2028.78
+ Concrete Sheet	79923.09	0.084	6713.54	9.125	61261.05
- Concrete hole Lens	-6311.45	0.084	-530.16	9.125	-4837.73
- Concrete Cork	-8243.53	0.084	-692.46	9.125	-6318.67
+ Steel Plate	7276.50	0.284	2066.53	7.125	14724.00
+ Steel Step	2574.00	0.284	731.02	12	8772.19
+ Pb. Ring	1846.67	0.412	760.55	11.5	8746.32
		Total	25972.44		140266.83

distance
from front
of Pb. to
center of
mass
 $(\text{Total wt} * \text{Distances}) / (\text{Total wt})$
5.4006026 in

from front
of shutter
6.1506026 in

Steel shell	14801.344	0.284	4203.58		
		Total Wt	30176.02 lbs		

A2-4 Calculations to Determine the Deflection of the Mechanical Shutter

The deflection of the Shutter when it is being supported by its bearings that are mounted to the under side of the shutter was calculated to ensure that the shutter would not break. The dimensions of the outer plates were determined and entered into Math Cad, the plates have a thickness of 0.75 inches. The centers for all the plates were then found and entered, this would allow the calculations to find the Centroidal Moment of Inertia. The mass was estimated, then the maximum bending deflection can be determined. The resulting deflection was -0.0005 inches. One large assumption was that the material within the shutter would not help to support the load over the span. This assumption would yield a larger deflection than the actual deflection, so this is a reasonable first order assumption. A more detailed analysis would have to be carried out if the results were not sufficient.

Upper Plate

$$UP_Thickness := 0.75 \text{ in}$$

$$UP_Width := 15.75 \text{ in}$$

$$UP_Area := UP_Thickness \cdot UP_Width$$

$$UP_Height_Center := 66.875 \text{ in}$$

$$UP_I := \frac{1}{12} \cdot UP_Width \cdot UP_Thickness^3$$

Side Plate

$$SP_Thickness := 0.75 \text{ in}$$

$$SP_Width := 65.75 \text{ in}$$

$$SP_Area := SP_Thickness \cdot SP_Width$$

$$SP_Height_Center := 33.625 \text{ in}$$

$$SP_I := \frac{2}{12} \cdot SP_Width^3 \cdot SP_Thickness$$

Bottom Plate

$$BP_Thickness := 0.75 \text{ in}$$

$$BP_Width := 15.75 \text{ in}$$

$$BP_Area := BP_Thickness \cdot BP_Width$$

$$BP_Height_Center := 0.375 \text{ in}$$

$$BP_I := \frac{1}{12} \cdot BP_Width \cdot BP_Thickness^3$$

$$Wt_Shutter := 30000 \text{ lbf}$$

$$Length_Shutter := 132 \text{ in}$$

Modules of Elasticity

$$E := 2.9 \cdot 10^7 \frac{\text{lbf}}{\text{in}^2}$$

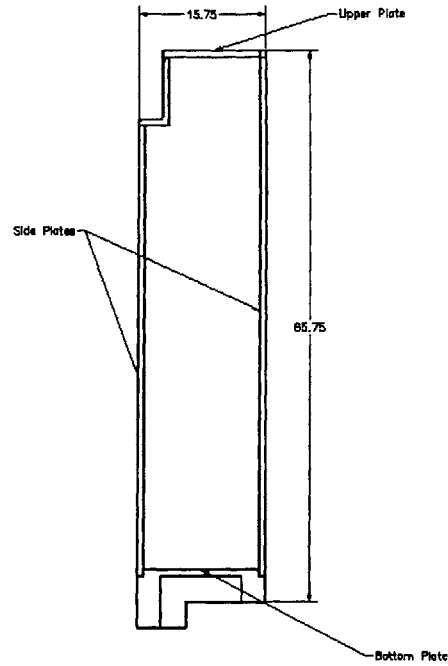


Figure A2-4 Cross-Section of the plates that make up the Mechanical Shutter

Central Axis

$$UP_axis = UP_Area \cdot UP_Hight_Center$$

$$SP_axis := SP_Area \cdot SP_Hight_Center$$

$$BP_axis = BP_Area \cdot BP_Hight_Center$$

$$Central_axis := \frac{UP_axis + SP_axis + BP_axis}{UP_Area + SP_Area + BP_Area}$$

$$I_UP := UP_I + UP_Area \cdot (UP_Hight_Center - Central_axis)^2$$

$$I_SP := SP_I + SP_Area \cdot (SP_Hight_Center - Central_axis)^2$$

$$I_BP := BP_I + BP_Area \cdot (BP_Hight_Center - Central_axis)^2$$

$$I_Total := I_UP + I_SP + I_BP$$

Deflection at Centre of the Shutter

$$Def := \frac{- \left(5 \cdot Wt_Shutter \cdot Length_Shutter^3 \right)}{384 \cdot E \cdot I_Total}$$

$$Def = -5.025 \cdot 10^{-4} \text{ in}$$

3

³ F. P. Beer and E. R. Johnston, Mechanics of Materials Second Edition, McGraw-Hill, Inc. Copyright 1992

A2-5 Calculations of Force to Operate the Ball Screw Drive for the Mechanical Shutter Manually

The force to turn the drive system for the Fast Shutter was determined once the Ball Screw Drive was in place on the shutter. A measurement of how much torque was required to start the shutter moving was carried out. This was carried out using a ruler and a lead brick. The ruler was wedged into eye of the drive when the drive was butted up against the end of the side support. Then by moving the lead weight out on the ruler, the length was measured when the shutter started to move. The weight was 11.5 lbs of force and the lever arm was eight inches. This experiment was done a couple of times with good repeatability, so the calculations then could be made with the data. The torque was calculated for the Through Shaft. This was then multiplied by two for the manual drive system because to go from the shaft to the hand crank, there is a sprocket with a mechanical advantage of two. Then the new torque was divided by the length of the handle to result in a force to move the shutter of 23 lbs of force. This number neglects the frictional gains along the way, but even a force of twice that would not be too difficult to move.

Length := 8 in

Force := 11.5 lbf

Torque := Force·Length

Mechanical_advantage := 2

Torque_handle := Mechanical_advantage ·Torque

length_handle := 8 in

Force_handle := $\frac{\text{Torque_handle}}{\text{length_handle}}$

Force_handle = 23 lbf

A3-1 CBI Consulting Inc.'s Report on Floor Loading

MEMORANDUM



DATE: March 6, 1999
TO: Ron Catella
Tel: (617) 253-5720
Fax: (617) 253-3737

CC: Bill Carson
Fax: (617)-253-7300

FROM: Craig E. Barnes, P.E.

SUBJ: NW12 - Reactor Building
CBI Job No.: 99024

Principals

Craig E. Barnes
Michael S. Teller
Wayne R. Lawson

In accordance with authorization of MIT we have evaluated the reactor building slab for the proposed loads associated with the installation of the medical research facility. The facility is essentially a containment room, which consists of wall and floor pieces, which are made from heavy aggregate concrete. We have utilized panel weights provided by MIT and where independent calculation is required are using a unit weight of 250 pcf and panel volume calculated from dimensions provided by MIT.

The containment room is entered through a doorway, which is closed by a 16 Ton door, which is suspended from a steel wide flange beam 12 inches deep and weighing 72 pounds per foot. There are other alternatives in beam sizes meeting structural criteria.

The beam spans from the inboard doorjamb to a mechanical anchor attached steel bracket secured to the reactor wall. See the attached sketch for bolt spacing. We set a deflection limit of 1/1200 or 0.12 inches, which is not exceeded by any alternative studied.

For the open floor area in the vicinity of the treatment room and within the treatment area we have assumed a live load of 50 (psf) pounds per square foot. This is the same limit used for office space. Even so the floor has the capacity for greater load. In response to a request from Bill Carson we have reviewed the maximum concentrated load which can be placed on the reactor room framed slab. We have assumed the following parameters for the study:

- Reinforcing steel in the framed slab is ASTM G 40.
- Concrete strength is 5000 PSI.
- Framed slab depth is 36".
- Design "d" distance is 34.56 inches.
- Framed slab is simply supported for a 21'-6" inside span.
- There is 2.43 sq. inch of effective tension steel per foot of analysis width assumed at 12 inch wide at mid span.
- Analysis is based on ACI-318-95, ultimate strength provisions.

12 Farnsworth Street
Boston, Massachusetts
02210-1276

t 617 350.8911
f 617 426.2971

CBI1984@aol.com



Page2
Memorandum
NW12-Reactor Building
CBI Job No; 99024
March 6, 1999

- The concentrated load is placed at mid span and shares the floor with a uniform load of 1000 PSF.
- The allowable concentrated load is 11,700 pounds for the listed condition.

Please contact us if you have any question. Should details be necessary to facilitate construction we would be glad to provide them under an extension to the current P.O.

CEB/kf
99024M001

A3-2 Calculations of Factor of Safety for the Saddle component

The edge of the U is the weakest part of the cantilever system with a factor of safety of about two, however with an additional angle bracket added so that the thinned section of the steel at the bend in the steel saddle would be reinforced to a factor of safety of about five.

$$\text{Bend_rad} := 1 \text{ in}$$

$$\text{Plate_thickness} := 0.75 \text{ in}$$

$$\text{quarter_circumfrinice} := \frac{1}{4} \cdot 2 \cdot \text{Bend_rad} \cdot 3.14159$$

$$\text{Area} := \text{Plate_thickness} \cdot \text{quarter_circumfrinice}$$

$$\text{Outter_rad} := \left(\frac{4 \cdot \text{Area}}{3.14159} + \text{Bend_rad}^2 \right)^{0.5}$$

$$\text{Outter_rad} = 1.581 \text{ in}$$

$$\text{Thinnest_section} := 0.7058 \text{ in}$$

$$\text{Tear_range} := 6 \text{ in}$$

$$\text{Sheet_thickness} := 0.75 \text{ in}$$

$$\text{Yield_Shear} := 21000 \frac{\text{lbf}}{\text{in}^2}$$

$$\text{Force} := 40000 \text{ lbf}$$

$$\text{Shear} := \frac{\text{Force}}{\text{Tear_range} \cdot \text{Thinnest_section}}$$

$$\text{FS} := \frac{\text{Yield_Shear}}{\text{Shear}}$$

$$\text{FS} = 2.223$$

$$\text{FS2} := \frac{\text{Yield_Shear}}{\left[\frac{\text{Force}}{\text{Tear_range} \cdot (\text{Thinnest_section} + \text{Sheet_thickness})} \right]}$$

$$\text{FS2} = 4.586$$

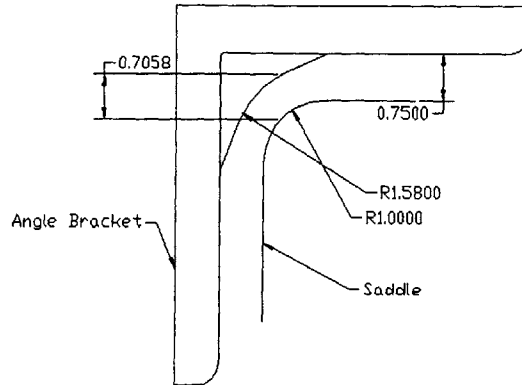


Figure A3-2 Thinning of Sheet Metal when it is bent

A3-3 Calculations to Determine the Deflection in the Medical Room Door

The Main I-Beam that supports the door to the Medical Room was designed by first determining the load that it will carry (the door 33,000 lb). Then deflection calculations were carried out along with shear, moment and angle calculations. Once a beam geometry was found that would be both a standard beam and a low enough deflection and which would not break, the beam was checked at another position. The points that were chosen was when the door is closed, and open. The deflection plots are displayed below.

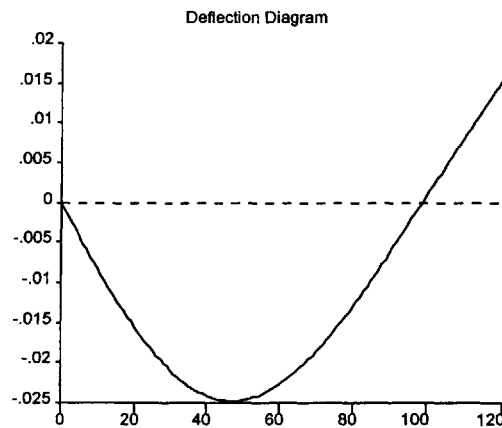


Figure A3-03a Deflection Plot of the Main I-Beam when the Door is closed

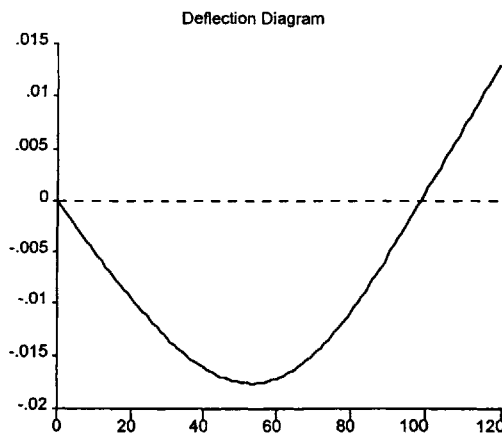


Figure A3-03b Deflection Plot of the Main I-Beam when the Door is open

With this data and the data that was determined when the deflection of the cantilever beam was selected and the cantilever I-beam geometry was calculated. The following plot shows the deflection of the cantilever I-beam when the most weight was applied to the beam. With calculations that Pete Stall calculated when the door is halfway open, the deflection of the door half way along its travel could be determined.

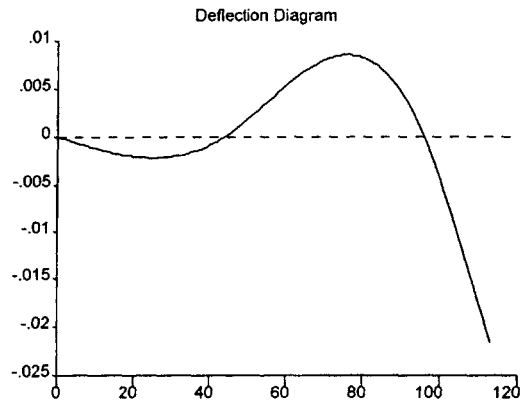


Figure A3-03c Deflection Plot of the Cantilever I-Beam at Maximum Loading

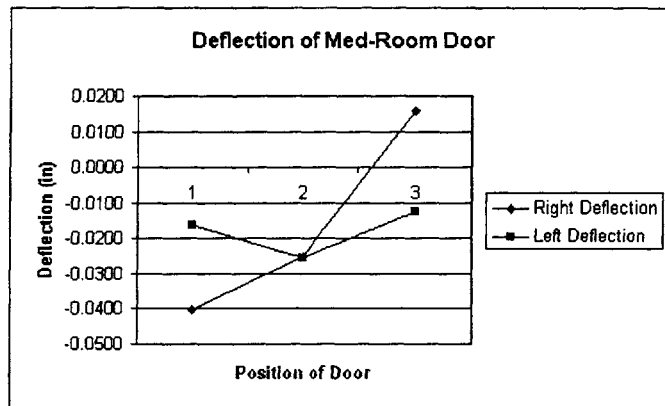


Figure A3-03d Total Deflection of the Medical Room Door at three points

The left deflection is the deflection of the door on its left most edge, while the right deflection is the deflection of the doors right most side. Point 1 is in the open position; point 3 is the closed position, while point 2 is in the middle. This plot was calculated by finding the slopes of the bearings at the three points and then extrapolating where the corners of the door would be. The results has the door no lower that -0.04 inches and no higher than 0.02 inches from the doors nominal position.

A3-4 Equations to Determine the Number and Size of Bolts to Mount the Saddle for the Medical Room Door Cantilever Beam

Torques were found around the leading edge of the saddle to determine the number of bolts to be used to mount the saddle to the wall. Then by increasing the number of bolts until a large enough factor of safety was found the number and placement of the bolts was found. The factor of safety that was determined adequate was 10. The bolts will be one-inch bolts, and not studs. The reason for the bolts is so that the saddle can be installed. A program from Hilti⁴ was used to check the work done above and to determine what type of anchors could be used. The anchor selection process chose HSL-M24 as the anchor to be used.

⁴ Hilti is a leader in the cement anchor business. <http://www.hilti.com/eng/sub/download/hidu-info.asp> (as of October 20, 1999)

$$\text{Load} := 20.5 \text{ in} \cdot 69.5 \text{ in} \cdot 103 \text{ in} \cdot 0.284 \frac{\text{lbf}}{\text{in}^3} \quad \text{Pi} := 3.14159$$

$$\text{DLoad} := 40 \text{ in} \quad \text{Load} = 4.168 \cdot 10^4 \text{ lbf}$$

$$\text{DRb} := 62 \text{ in} \quad \text{Numb} := 2$$

$$\text{DRc} := 74 \text{ in} \quad \text{Numc} := 4$$

$$\text{Ab} := \text{Numb} \cdot \text{Pi} \cdot (0.5 \text{ in})^2$$

$$\text{Ac} := \text{Numc} \cdot \text{Pi} \cdot (0.5 \text{ in})^2$$

$$\text{Rb} := \text{Load} \cdot \frac{\text{DLoad}}{\text{DRb} + \text{DRc} \cdot \left(\frac{\text{Ac}}{\text{Ab}} \right)}$$

$$\text{Rc} := \text{Rb} \cdot \left(\frac{\text{Ac}}{\text{Ab}} \right)$$

$$\text{Rb} = 7.938 \cdot 10^3 \text{ lbf}$$

$$\text{Rc} = 1.588 \cdot 10^4 \text{ lbf}$$

$$\text{Shearb} := \frac{\text{Rb}}{\text{Ab}}$$

$$\text{Shearc} := \frac{\text{Rc}}{\text{Ac}}$$

$$\text{YealdShear} := 56000 \frac{\text{lbf}}{\text{in}^2}$$

$$\text{FoSb} := \frac{\text{YealdShear}}{\text{Shearb}}$$

$$\text{FoSc} := \frac{\text{YealdShear}}{\text{Shearc}}$$

$$\text{FoSb} = 11.081$$

$$\text{FoSc} = 11.081$$

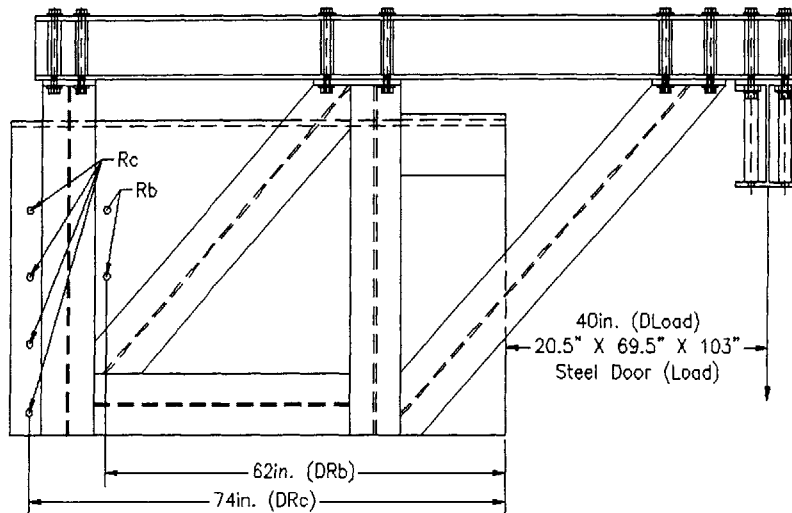


Figure A3-04 Schematic of the Cantilever Beam System that depicts critical dimensions and Bolt Holes

A3-5 Calculations to Determine the Geometry of the Ramp and the Door crack for the Medical Room

Kent Riley⁵ created a spreadsheet that would calculate the streaming of radiation from under the Medical Room Door. As long as the aspect ratio was true, then the geometry of the ramp before the door and the clearance under the door would be values that could be used. The purpose of using this sheet is to maximize the clearance beneath the door while keeping the aspect ratio true and the ramp to be a reasonable slope that would not be noticed too much. The results of the spreadsheet were the clearance under the door would be 0.363 inches; the ramp is 11 inches long and has a one-inch rise. This over all geometry will result in a streaming dose rate of 0.43 milli-rem per hour.

VARIABLES:

Distance from peak of ramp to door: 11 in.

Height of ramp: 1 in.

Clearance beneath door: 0.363 in.

RESULTS:

Aspect Ratio OK? **TRUE**

Dose rate at crack on door outside surface: **0.43** mrem/hr

FIXED VALUES:

Door Thickness: 17.5 in.

Door Width: 43 in.

Dose Rate inside the Hallway: 10000 mrem/hr

⁵ Riley, Kent Personal Communication November 1998 through October 1999

A4-1 Supplemental Equations to the Strength of the Corner 3, Blocks

$$tA1 := 54$$

$$c := .25$$

$$BccA1 := \exp \left[c \cdot \left[1 - \left(\frac{28}{tA1} \right)^{.5} \right] \right]$$

$$fcmA1 := \frac{4812}{BccA1}$$

$$fcmA1 = 4.487 \cdot 10^3 \text{ psi}$$

$$tC1 := 25$$

$$BccC1 := \exp \left[c \cdot \left[1 - \left(\frac{28}{tC1} \right)^{.5} \right] \right]$$

$$fcmC1 := \frac{4676}{BccC1}$$

$$fcmC1 = 4.745 \cdot 10^3 \text{ psi}$$

$$tC2 := 25$$

$$BccC2 := \exp \left[c \cdot \left[1 - \left(\frac{28}{tC2} \right)^{.5} \right] \right]$$

$$fcmC2 := \frac{3978.7}{BccC2}$$

$$fcmC2 = 4.037 \cdot 10^3 \text{ psi}$$

Corner 3 Block A & C

A1 = Bottom Block

C1 = Third Block from the bottom
first sample

C2 = Third Block from the bottom
second sample

All sample sizes are 4" diameter cylinders

Bcc## = A factor that acts as a place
holder for later calculations

t## = The amount of time in days that has
passed since the block was poured

fcm## = Strength of the concrete

(##) indicates the block name

6

⁶ A. Ghal and R. Favre Concrete Structures: Stress and Deformations Second Edition, E&FN Spon 1994